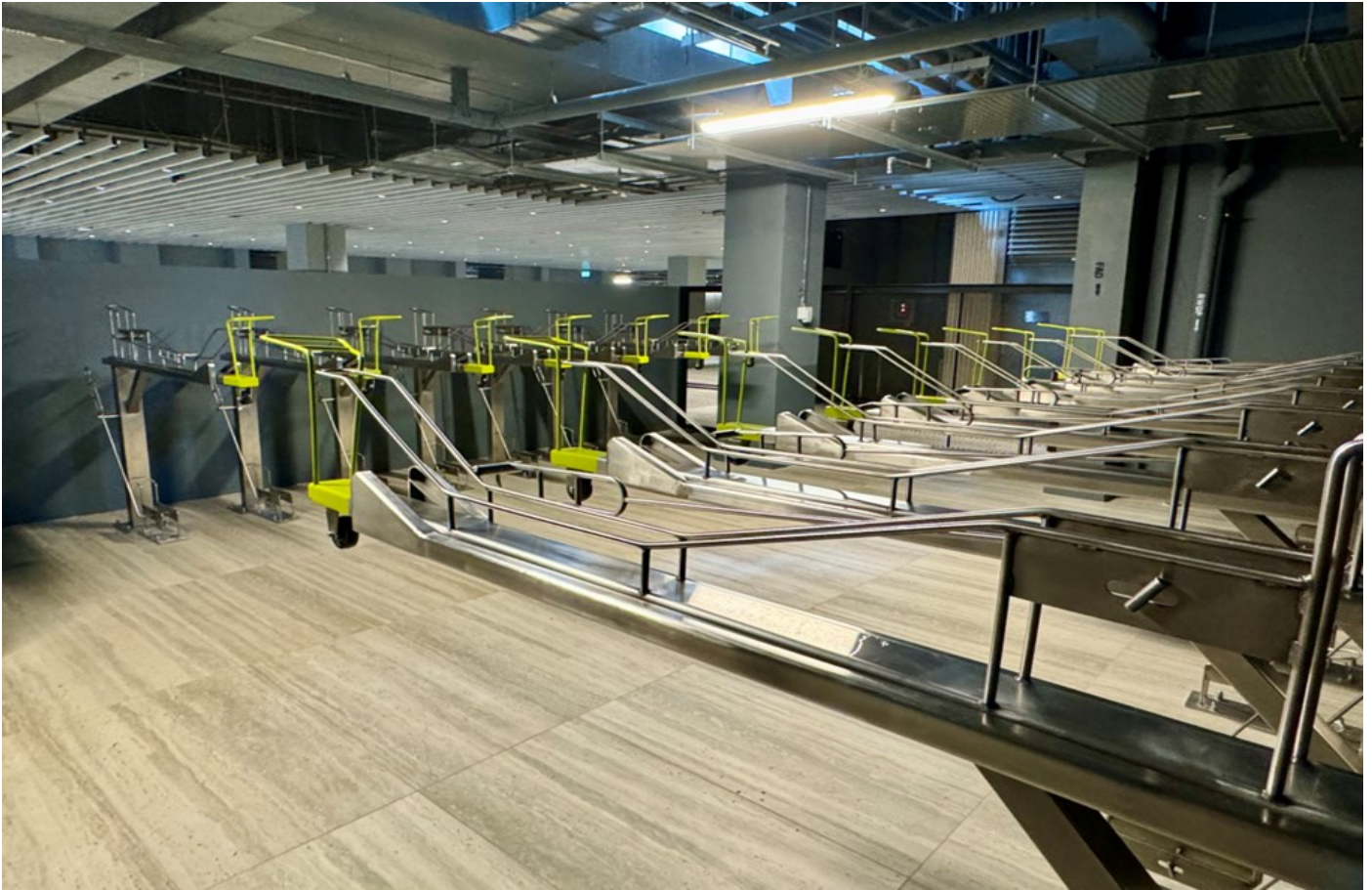


# PRODUCT CATALOGUE

## *BICYCLE RACKS & END-OF-TRIP (EOT) FACILITIES*



ALLIANZ INTERNATIONAL PTE LTD



## Disclaimer

The information in this catalogue is accurate at the time of printing and remains valid, but may be subject to change. This material does not constitute legal or professional advice. Allianz International Pte Ltd accepts no responsibility and makes no representations, express or implied, regarding the accuracy or reliability of any material in this publication. Except where required by law, Allianz International Pte Ltd accepts no responsibility for any consequences arising from reliance on this material.

Allianz International Pte Ltd will not be liable to you or any other party for any loss or damage, including direct, consequential, or economic loss, whether caused by negligence or otherwise, resulting directly or indirectly from the use of this publication.

© Allianz International Pte Ltd 2024

Published by Allianz International Pte Ltd, 2024  
Except as permitted by the Copyright Act, this material may not be reproduced, stored or transmitted without the permission of the copyright owner. All enquiries must be directed to Allianz International Pte Ltd.

# CONTENT PAGE

<b>PSB 100,000 CYCLIC TEST</b>	4
<b>ATTRIBUTES</b>	6
<b>MATERIALS AND FINISHES</b>	8
<b>PARKABIKEZ DOUBLE TIER SERIES</b>	9
DOUBLE TIER U SERIES	10
DOUBLE TIER L SERIES	12
<b>PARKABIKEZ SINGLE TIER SERIES</b>	15
SINGLE TIER P SERIES	16
SINGLE TIER O SERIES	18
SINGLE TIER MULTI SERIES	20
<b>CUSTOM BICYCLE RACK STYLES</b>	22
CUSTOM STYLE STAGGERED TIER	25
<b>BICYCLE LOCKER SERIES</b>	27
<b>SPECS &amp; WARRANTY</b>	30
<b>OTHER END-OF-TRIP FACILITIES</b>	32
PERSONAL SMART LOCKERS AND BICYCLE STORAGE	34
BICYCLE REPAIR STATION	35
SECURED AND AUTOMATIC MAIN DOOR ACCESS	37
SHOWER AREA & CHANGING ROOMS	38
BICYCLE FEATURE WALLS AND SIGNAGES	39



# PSB 100,000 CYCLIC TEST CERTIFIED



PSB Singapore

**PSB SÜD TÜV** is a service provider offering a comprehensive suite of product testing, inspection, auditing, certification, training, and knowledge services. Their 100,000-cycle test is designed to assess how a machine performs after extensive, repeated use.

**Our double-tier bicycle rack underwent testing by PSB, and after 100,000 cycles (with the top tier being pulled down and put back up), it was found to be in perfect working condition, with no visible damage or malfunction.** Assuming the rack is used twice daily by someone parking their bicycle, this guarantees years of worry-free operation, offering peace of mind to both users and developers.





**Since 2006, the ParkAbikeZ Double-Tier Bicycle Rack System has been providing cyclists with safe, secure, and reliable parking for their bicycles.**

The double-tier system maximises parking options in limited spaces, helping to create neat and organised parking areas. Not only does this encourage more people to cycle and exercise, but it also helps reduce the number of cars on the road, benefiting both traffic conditions and the environment.

**With a robust steel body and advanced hydraulic assistance technology, ParkAbikeZ offers a sturdy yet user-friendly experience, making bicycle parking convenient and efficient.**

# ATTRIBUTES

- ✓ The **gradient in the top-tier pocket** allows rainwater to flow out, preventing water retention.
- ✓ **Special gaps and perforated holes** are included for proper drainage, reducing the risk of trapped debris and mosquito breeding.
- ✓ The **rollers feature built-in, hidden bearings** for smooth retraction, minimising friction during use.
- ✓ ParkAbikeZ racks utilise a **Made-in-Japan heavy-duty hydraulic system**, which prevents ground surface damage and enhances ease of use.
- ✓ **Contact points are painted with luminous colours** to increase visibility to pedestrians.
- ✓ **All contact edges** are de-burred and rounded to prevent potential injuries.
- ✓ The racks have been **publicly tested and installed at MRT stations**, proving suitable for both senior and younger users.
- ✓ The **second tier's height** has been ergonomically adjusted to avoid health issues.
- ✓ After discussions with the **LTA**, a heavy-duty 50 mm “L”-shaped galvanised steel bar was added to improve safety on the lower tier.
- ✓ All bicycle racks are made from **hot-dip galvanised steel** to **BS ISO EN 1461:1999** or equivalent standards.
- ✓ Additionally, they are **polyester powder-coated** for rust resistance, with **stainless steel options** available.







# MATERIALS AND FINISHES

ParkAbikeZ offers various materials and finishes to cater to clients' specific needs, making it suitable for any type of bicycle rack provided. The table below outlines the available materials and finishes:

Material	Finishes
Galvanised Steel	Powder Coating
Stainless Steel (SS304)	Polished finishes
	Satin finished
Stainless Steel (SS316)	Polished finishes
	Satin finished





# ***PARKABIKEZ DOUBLE TIER SERIES***





# DOUBLE TIER U SERIES





# U SERIES BICYCLE RACK

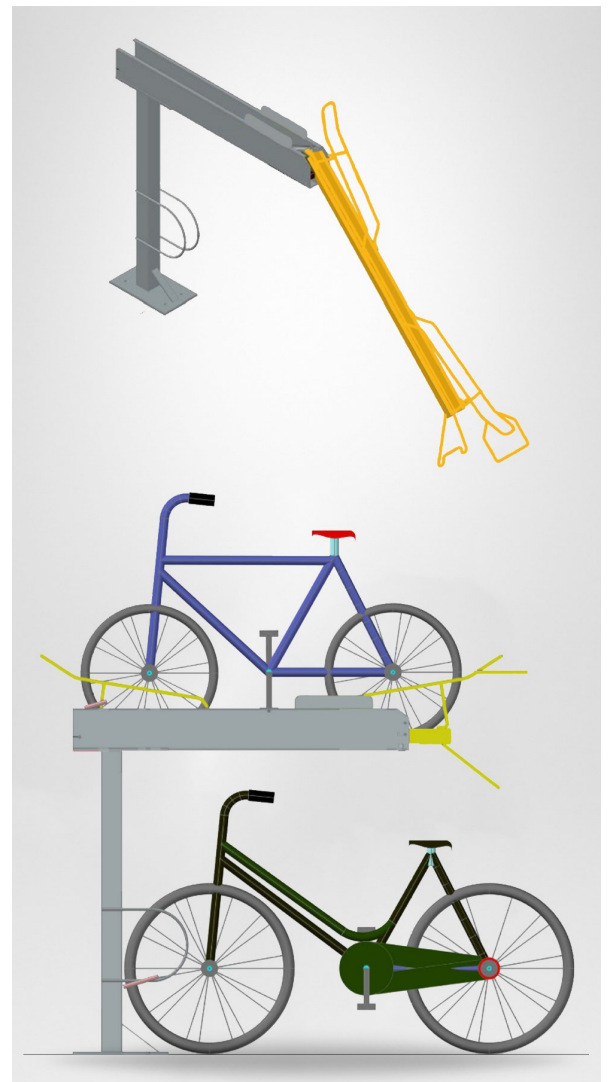
Our U Series bicycle rack is a timeless design, first installed at Pasir Ris Station in 2006. Each rack is made entirely of **hot-dip galvanised steel**, which is coated with a special layer of zinc to enhance resistance against rust and wear. It is then **powder-coated** in grey, providing a smooth finish and extra protection against the elements.

The racks are securely anchored to the ground using **4 HILTI expansion bolts**, which undergo pull-out testing upon installation to ensure stability.

The **top tier** is equipped with a **heavy-duty hydraulic system**, allowing it to be pulled down slowly and safely. This system also assists in lifting the bicycle back to its top resting position, making it user-friendly for both elderly and younger cyclists.

## Technical Requirements

- **Headroom:** 2300 mm
- **Pull-down allowance:** 3500 mm
- **Distance between racks:** 650 mm (centre to centre)



# DOUBLE TIER L SERIES

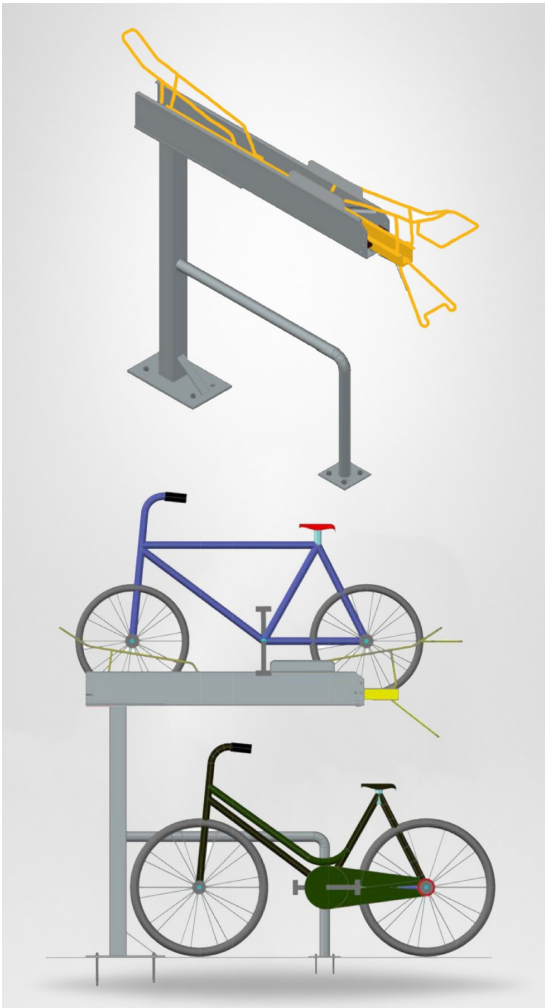








# L SERIES BICYCLE RACK



The L Series bicycle rack is the latest addition to our double-tier family. In response to feedback from government bodies and extensive research by Allianz International Pte Ltd, we have incorporated an optional L-shaped bar for enhanced security and stability.

## Key Features

- The **L-shaped bar** allows for secure attachment of the bicycle's body at the bottom tier, rather than just the front wheel, providing added protection.
- **Increased stability** is achieved with the addition of 4 smaller HILTI anchor bolts at the ends of the L-bar, creating an extra point of support.
- The rack continues to use **hot-dip galvanised steel** and the **heavy-duty hydraulic system** to ensure ongoing durability and quality.

## Technical Requirements

- **Headroom:** 2300 mm
- **Pull-down allowance:** 3500 mm
- **Distance between racks:** 650 mm (centre to centre)

# ***PARKABIKEZ SINGLE TIER SERIES***

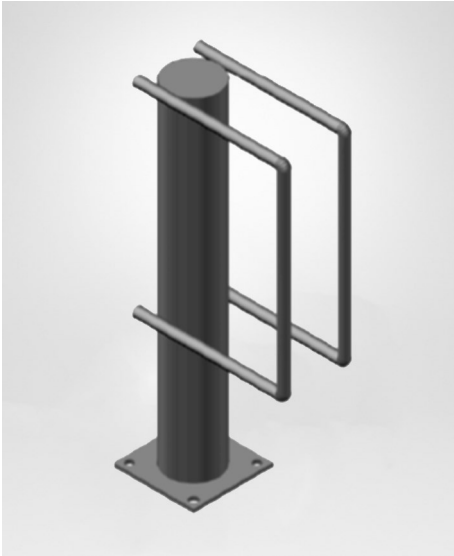


# SINGLE TIER P SERIES



For a contemporary and highly functional solution to bicycle parking, explore the P Series. These space-efficient racks feature a robust single-tier design that accommodates various bicycle types, ensuring both security and ease of use for cyclists. Engineered for durability, the P Series racks are available in galvanized or stainless steel finishes, providing long-lasting performance while maintaining a sleek, modern aesthetic. Whether for urban areas or commercial spaces, the P Series offers a practical yet stylish addition to any bicycle parking facility.





## **P1 - The All-Rounder**

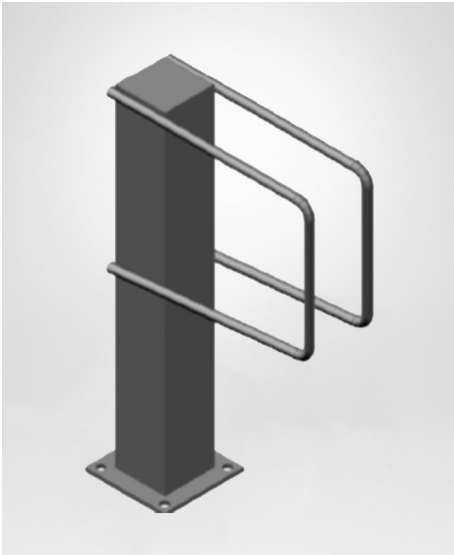
Model: AZ Single-Tier Bicycle Rack

Installation: Floor Fixed

Height: 500 mm

Width: 120 mm

Length: 200 mm



## **P2 - The Solid Square**

Model: AZ Single-Tier Bicycle Rack

Installation: Floor Fixed

Height: 500 mm

Width: 120 mm

Length: 300 mm



## **P3 - The Wall & Floor**

Model: AZ Single-Tier Bicycle Rack

Installation: Floor & Wall Mounted

Height: 500 mm

Width: 230 mm

Length: 300 mm

# SINGLE TIER O SERIES



For a stylish and modern solution to bicycle parking, consider the O Series. These single-tier racks blend sleek design with innovative features, offering cyclists a secure and convenient way to park and lock their bicycles. Available in both galvanised and stainless steel, the O Series racks add a touch of class and sophistication to any bicycle parking area.



## **O1 - The Crest Wave**

Model: AZ Single-Tier Bicycle Rack

Installation: Floor Fixed

Height: 800 mm

Width: 600 mm

Thickness: 50Ø 2mm THK. G.S Circular Hollow Section



## **O2 - The Hulla Hoop**

Model: AZ Single-Tier Bicycle Rack

Installation: Floor Fixed

Height: 860 mm

Width: 940 mm

Thickness: 50Ø 2mm THK. G.S Circular Hollow Section



## **O3 - The Horizontal Sphere**

Model: AZ Single-Tier Bicycle Rack

Installation: Floor Fixed

Height: 860 mm

Width: 940 mm

Thickness: 50Ø 2mm THK. G.S Circular Hollow Section



# SINGLE TIER MULTI SERIES



Our Multi Series is designed to achieve two primary objectives with all our bicycle parking systems: providing a safe and secure parking area while ensuring the space remains organised and user-friendly. The Multi Series offers a versatile range of space solutions tailored to fit various environments, including vertical, slanted, and ground options. With such flexibility, there is sure to be a Multi Series rack to meet your specific needs, enhancing both the security and functionality of your bicycle parking area.



## **MS1 - The Spiral Saver**

Model: AZ Spiral Bicycle Rack

Parking: Multiple Bicycle

Installation: Floor Mounted

Height: 700 mm

Length: 1200 mm



## **MS2 - The Secure Slanted**

Model: AZ Slanted Bicycle Rack

Parking: Multiple Bicycle (6)

Installation: Floor Fixed

Height: 1829mm

Width: 1143mm

Thickness: 50Ø 2mm THK. G.S Circular Hollow Section



## **MS3 - The Stylish Vertical**

Model: AZ Vertical Bicycle Rack

Parking: Multiple Bicycle (6)

Installation: Vertical Wall Fixed

Height: 340mm

Width: 91mm

Depth: 580mm



# ***CUSTOM BICYCLE RACK STYLES***

Customisation remains at the forefront of our product offerings, and our bicycle racks are no exception. We recognise that each individual has unique requirements, which is why we provide a diverse range of options to meet those needs.

Our double and single tier racks are available in both galvanised and stainless steel, with powder coating finishes included as standard. For those seeking to introduce a touch of vibrancy, we offer extensive colour customisation.

Moreover, we are able to accommodate detailed design modifications tailored to your specific requirements. Whether you seek a distinctive shape, additional features, or bespoke branding, we are committed to realising your vision.

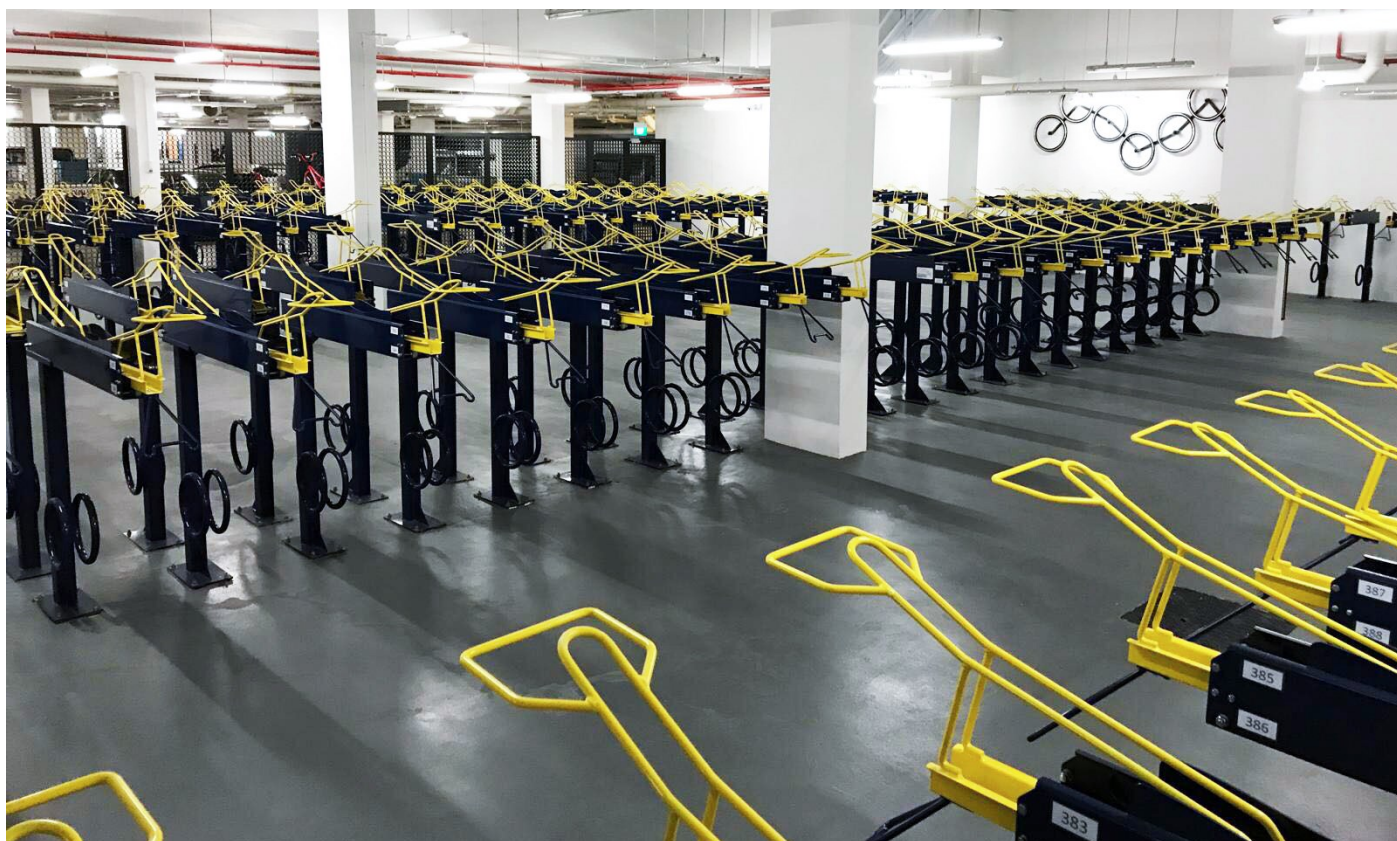


# CUSTOM STYLE SINGLE TIER





# CUSTOM STYLE DOUBLE TIER





# CUSTOM STYLE STAGGERED TIER

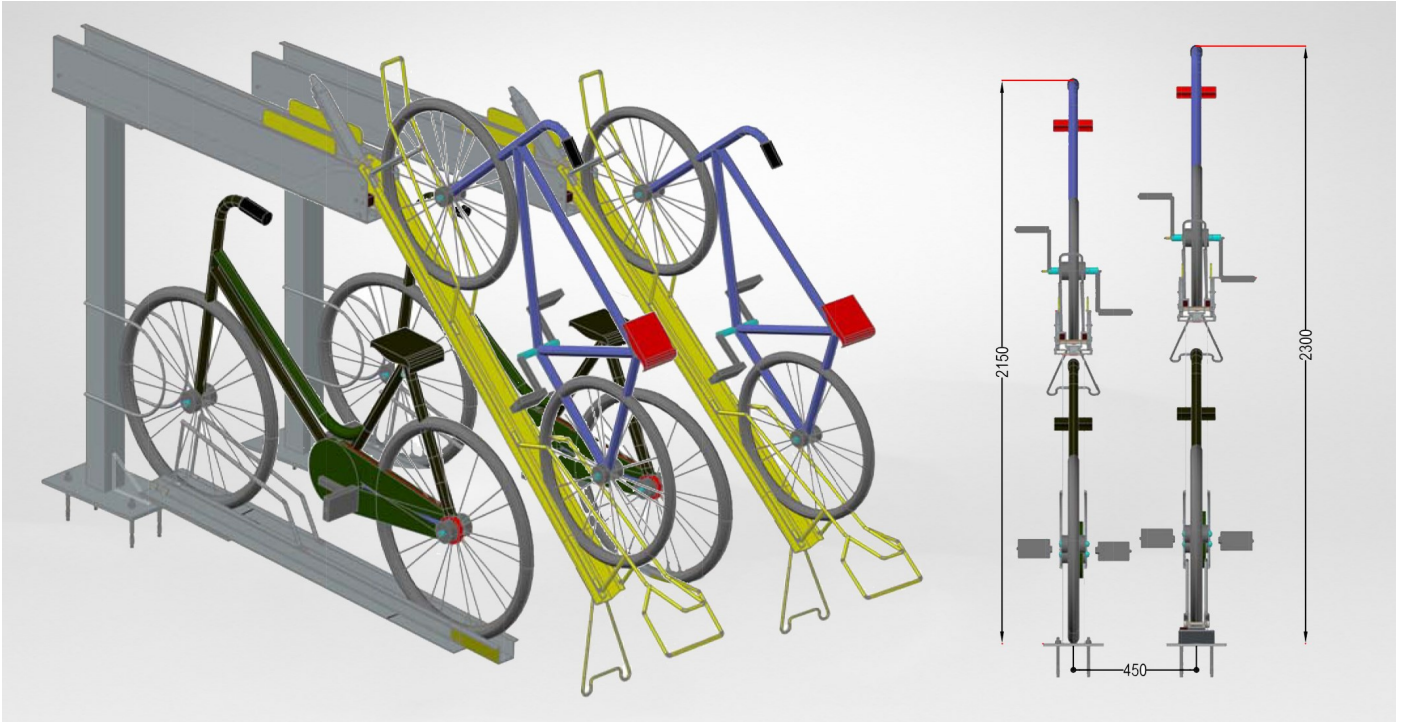


## **Maximising Space with Our Custom Staggered Tier Bicycle Racks**

When space is at a premium, our custom style staggered tier bicycle racks provide an effective solution. While standard designs typically require a minimum gap of 600mm between each rack to prevent bicycle contact, our staggered system allows you to reduce this gap to just 450mm.

By strategically varying the height of each rack, our design ensures that bicycles are positioned closer together without the risk of collision. This innovative approach optimises space utilisation while maintaining the safety and accessibility of your bicycle parking solution.





## **CS – Staggered Tier Bicycle Rack**

Model: AZ Double Tier Staggered System

Installation: Floor Fixed

Height: 2150/2300 mm (with bicycle)

Length: 1912 mm (Top Tier up)

# ***BICYCLE LOCKER SERIES***





# BICYCLE LOCKER SERIES



## **ParkAbikeZ Bicycle Locker: Ultimate Security for Your Bicycle and Gear**

For many, a bicycle is more than just a mode of transportation—it is a trusted companion that takes us wherever we need to go. We recognise the importance of safeguarding this investment, especially for those who have meticulously cared for and customised their bicycles.

When a bicycle chain lock is no longer sufficient, our ParkAbikeZ Bicycle Locker offers an enhanced level of security. Designed with both the bicycle and rider in mind, our locker system provides a secure haven not only for your bicycle but also for your riding equipment.

### **Key Features**

- **Comprehensive Security:** Protects your bicycle from theft and tampering.
- **Ergonomic Design:** Accommodates your helmet, gloves, and other personal items.
- **User-Centric:** Tailored to meet the practical needs of riders, ensuring ease of use and secure storage.



## **ParkAbikeZ Bicycle Locker: Thoughtful Design for Your Bicycle and Gear**

Inside the ParkAbikeZ Bicycle Locker, you'll discover a meticulously designed interior that enhances both functionality and convenience:

- **Vertical Parking Area:** A dedicated space for your bicycle, complemented by a wheel tray below that helps guide your bike into position. This feature ensures your bicycle remains upright and secure once the door is closed.
- **Top Hooks:** Ideal for storing helmets, riding gloves, and even coat hangers for your riding shirt or other gear, providing an organised and accessible solution for all your accessories.
- **Perforated Middle Tray:** Serves as a versatile platform for GPS units, riding lights, and also a cool area for riding shirts. The perforated design allows air circulation, preventing dampness and keeping your clothing fresh.



## **Advanced Security with TESA - ASSA ABLOY Digital Push Button Lock**

Each ParkAbikeZ Bicycle Locker is equipped with a TESA - ASSA ABLOY Digital Push Button door lock. This state-of-the-art lock system combines ease of use with high security:

- **User Friendly Setup:** Easily programmed with a 4-digit code, allowing for straightforward setup and management.
- **Enhanced Security:** Provides robust protection for your bicycle and gear, ensuring peace of mind with advanced locking technology.



# ***SPECIFICATIONS & WARRANTY***



# SPECIFICATIONS & WARRANTY

## AZ 2-Tier Bicycle Rack Specifications

### Headroom and Access Requirements

- The AZ 2-Tier Bicycle Rack requires a minimum of 2.3 meters of clear headroom (650mm apart from C2C).
- With 2.6 meters of headroom, the decks can be positioned closer together, thereby increasing capacity.
- A clearance of 2.5 meters is required in front of the units for proper access.

### Material and Finish

- Our racks are constructed from hot-dip galvanised steel conforming to BS ISO EN 1461:1999 or an equivalent standard.
- The finish includes a polyester powder coating to ensure anti-rust properties.

### Durability and Testing

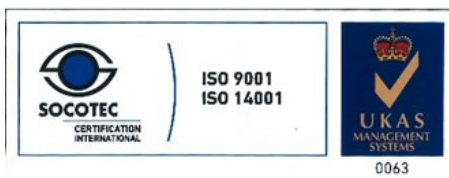
- Double tier racks have been rigorously tested to 100,000 cycles by TÜV SÜD PSB, Singapore. Even after 100,000 cycles of operation, no visible damage was observed.
- TÜV SÜD PSB is accredited under the Singapore Accreditation Council Singapore Laboratory Accreditation (SAC-Singlas) Scheme to ISO/IEC Guide 25 (ISO/IEC 17025) and ISO Guide 65.

### Mounting and Approval

All HILTI expansion bolts used with our racks are approved by the Land Transport Authority (LTA). Specifications can be provided upon request.

### Warranty

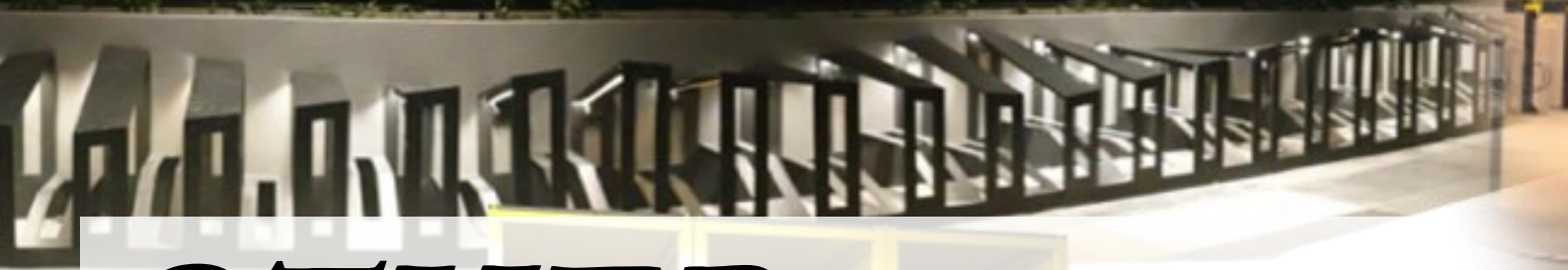
All bicycle racks come with a one-year warranty against manufacturing defects. For further details or specific requirements, please contact us. We are committed to providing high-quality solutions tailored to meet your needs.





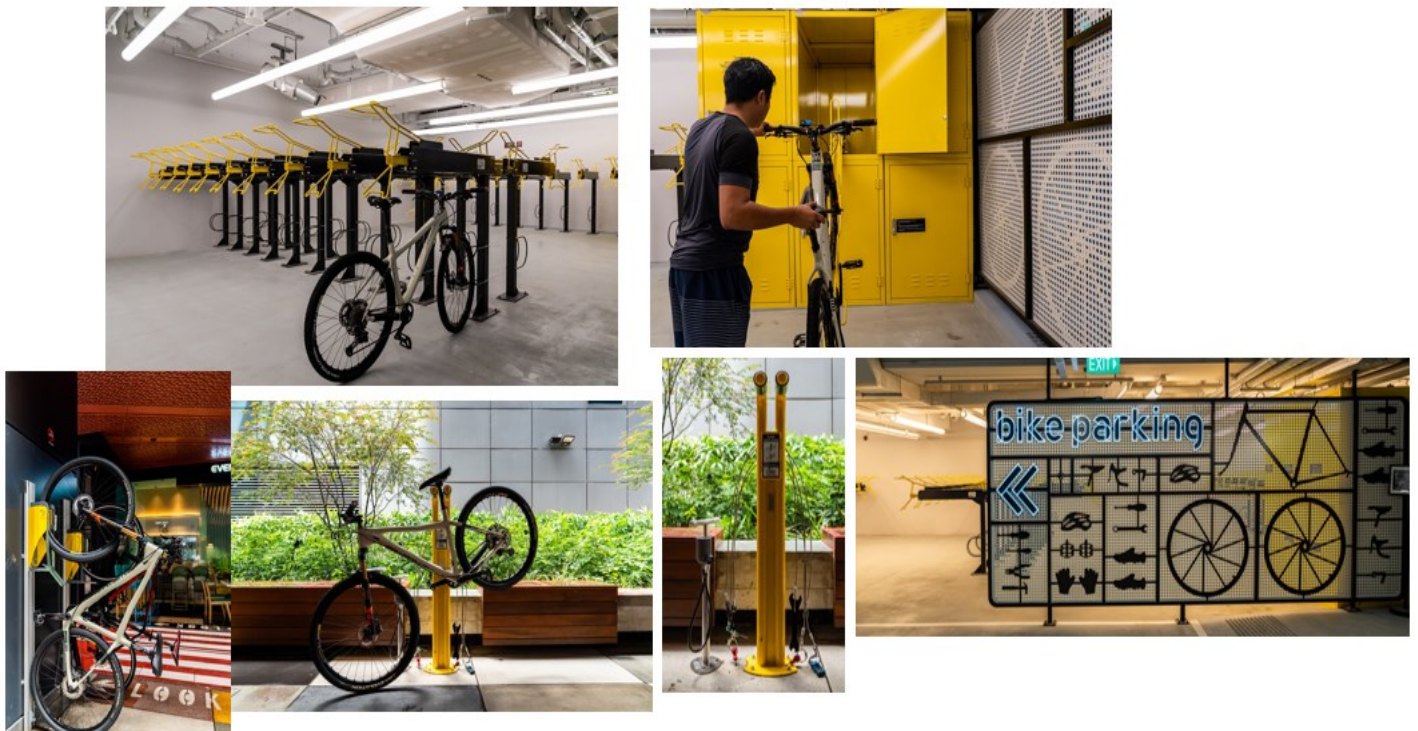


On your bike >>



***OTHER  
END-OF-TRIP  
(EOT)  
FACILITIES***

# COMPREHENSIVE EOT FACILITY SOLUTIONS



At Allianz International Pte Ltd, we recognise the diverse needs of today's commuters and cyclists. Our **extensive range of end-of-trip facility offerings** is designed to enhance convenience, security, and comfort. We provide innovative solutions including **Personal Smart Lockers and Bicycle Storage**, ensuring secure and accessible storage for both your bicycle and personal belongings. Our **Bicycle Repair Stations** offer practical solutions for on-the-go maintenance, while **Secured and Automatic Main Door Access** ensures a seamless and safe entry experience. Additionally, our **Shower Areas and Changing Rooms** provide the comfort and facilities needed to refresh after your journey. We also offer **Bicycle Feature Walls and Signages** to enhance the visual appeal and functionality of your space. Discover how our tailored solutions can transform your end-of-trip experience into a seamless and enjoyable part of your day.



# PERSONAL SMART LOCKERS & BICYCLE STORAGE

## Types of Bicycle Lockers

- Vertical Bicycle Locker
- Vertical Multi-purpose Bicycle Locker
- Horizontal Bicycle Locker
- 2-Tier Horizontal Bicycle Locker

*Materials: Stainless Steel and Aluminium*

## Locking Systems

- AZ TESA Code lock
- Master Key / 1 & Individual Keys / 3
- Battery vs Network Operated
- Key vs Keyless
- Management Software
- One Time Use vs Long Term Use
- New vs Retrofitting



# BICYCLE REPAIR STATIONS

## Work Stand/Repair Station: Essential Tools at Every Cyclist's Fingertips

The Public Work Stand/Repair Station offers a convenient solution for cyclists, placing vital tools exactly where they are needed – on trails, near streets, or in bike rooms. Equipped with nine commonly used tools, all securely tethered to a robust bike holder, this station supports quick repairs for both indoor and outdoor use. This ensures that cyclists can maintain their bikes and continue their journey with confidence and ease.

- **Universal bike mounting:** Easily hang by seat or top tube.
- **Innovative I-beam design:** Prevents bikes from being locked to the station.
- **Durable tool set:** Nine essential tools tethered with stainless steel aircraft cable for long-lasting use.





# DIGITAL AIR PUMP



**The Digital Air Pump is a robust, wall-mounted or free-standing inflator, tailored for EOT facilities.** Designed to enhance corporate image, it delivers safe, accurate, and reliable tire inflation for users. With a heavy-duty, weatherproof, and vandal-resistant enclosure, it's suitable for both indoor and outdoor use.

Alliancz International provides comprehensive support, including:

- MOM application and registration of the pressure vessel (with PE inspection and endorsement)
- Full administrative and technical support for installation.

# SECURED & AUTOMATIC MAIN DOOR ACCESS

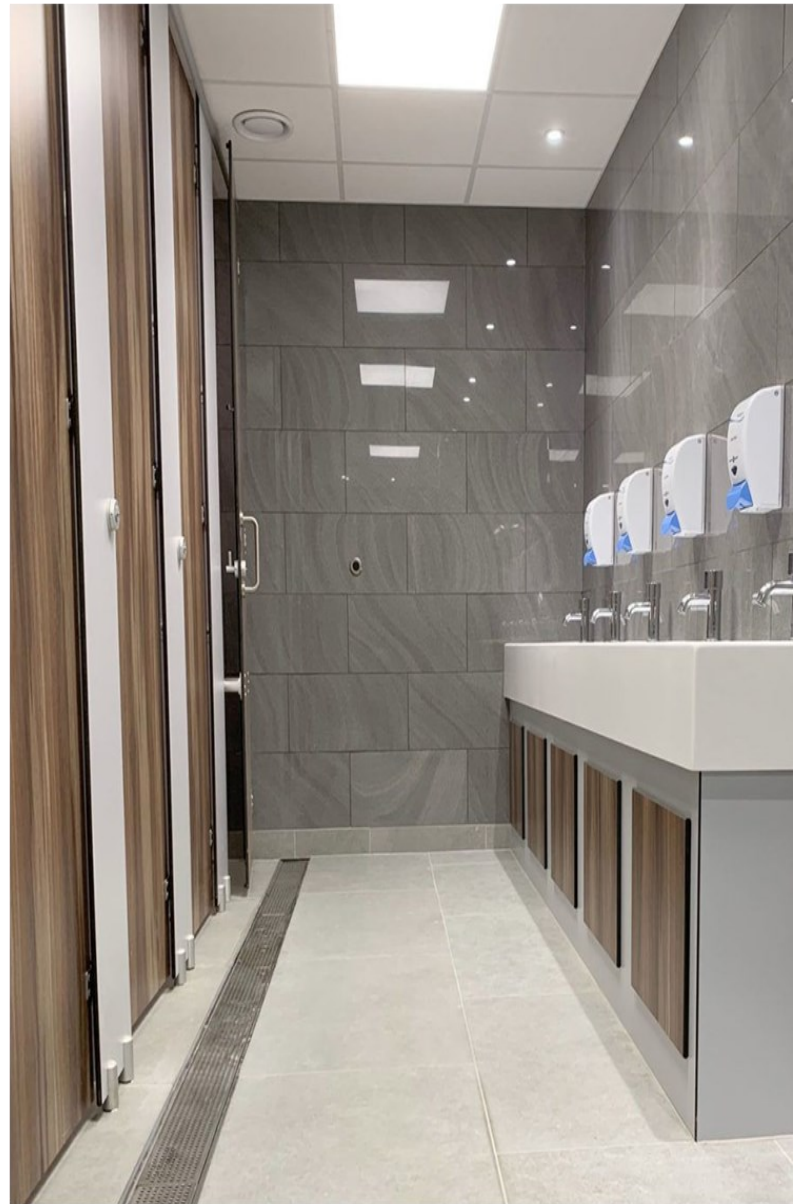


## Technical Features

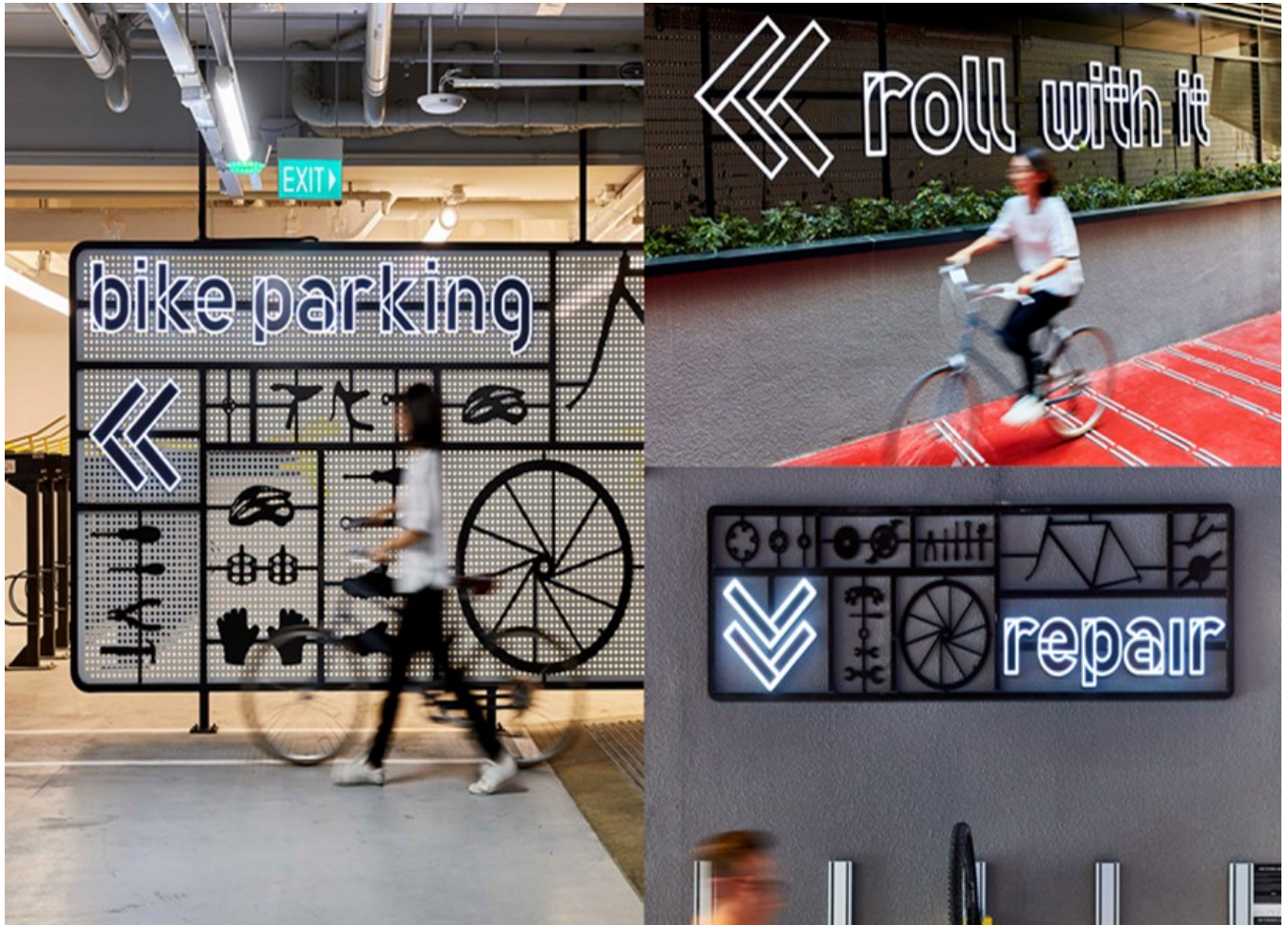
- Built-in buzzer & backlight
- Dry contact output
- Built-in mechanical override in case of power failure or electronic failure
- Digital timer to control the relay output timing from 1 to 64 seconds
- DIP switch to adjust the sensitivity for different installed environments.



# SHOWER AREAS & CHANGING ROOMS



# FEATURE WALLS & SIGNAGES



- **Illuminated Signage Solutions:** Aluminum box-up or acrylic cut-out letters/icons with LED lighting, available with or without timer switch.
- **Laser-cut Metal Plates:** With matte or rustic finishes, offering a timeless, classic appeal.





## CONTACT US

ALLIANCZ INTERNATIONAL PTE LTD

Address: 40 Ubi Crescent, #01-02, Ubi Techpark, Singapore 408567

Website: [www.allianczinternational.com](http://www.allianczinternational.com)

Email: [enquiry@allianczinternational.com](mailto:enquiry@allianczinternational.com)

Telephone: 6743 3313

