

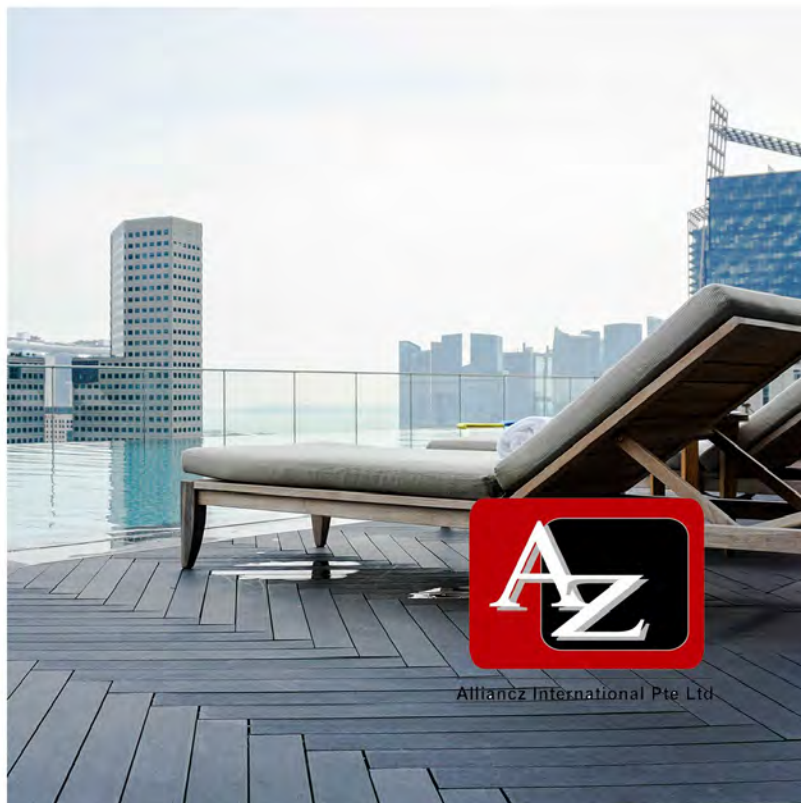


# AZ Greenins Deck PRODUCT CATALOGUE



DECKING • BENCHES • STAIRCASES & TRELLIS • CLADDING

ALLIANCZ INTERNATIONAL PTE LTD



Alliancz International Pte Ltd

## **Disclaimer**

Information in this catalogue is correct at the time of printing and valid but may be subject to change.

This material does not purport to constitute legal or professional advice. Allianz accepts no responsibility for and makes no representations, whether express or implied, as to the accuracy or reliability in any respect of any material in this publication. Except to the extent mandated otherwise by legislation, Allianz does not accept responsibility for the consequences of any reliance which may be placed on this material by any person.

Allianz will not be liable to you or to any other person for any loss or damage (including direct, consequential or economic loss or damage) however caused and whether by negligence or otherwise which may result directly or indirectly from the use of this publication.

Copyright Allianz International  
© Allianz International 2018.

Except as permitted by the Copyright Act, this material may not be reproduced, stored or transmitted without the permission of the copyright owner. All enquiries must be directed to Allianz International.

Published by Allianz International 2018.

# *CONTENT PAGE*

<b>SINGAPORE GREEN LABEL CERTIFICATE</b>	<b>4</b>
<b>ATTRIBUTES</b>	<b>7</b>
<b>DECKING</b>	<b>9</b>
<b>STAIRCASE &amp; TRELLIS</b>	<b>14</b>
<b>BENCHES</b>	<b>16</b>
<b>WALL CLADDING</b>	<b>19</b>
<b>AZ GREENINS DECK DETAILS</b>	<b>21</b>
DESIGN	22
INSTALLATION	24
SPECIFICATION & WARRANTY	26



## SINGAPORE GREEN LABEL CERTIFICATE

Administered by the Singapore Environment Council (SEC), the SGLS is the region's most established eco labelling scheme with over 3 000 unique products certified across 28 countries. The Singapore Green Label is a seal of endorsement on its environmentally-friendly claims to prevent the abuse of green-washing. Alliancz is committed to a greener future, and AZ Green Deck has earned the Green Label certificate for its eco friendly make up of at least 50% recycled materials.



## INTERTEK FIRE CERT

Intertek		
<b>Test Report</b>		<b>Report Number: 160315004SHF-BP-1</b>
<b>2 RESULTS AND OBSERVATIONS</b>		
The test results were shown in Table below.		
Method	Parameter	Result
EN 13823:2010	FIGRA, W/s	64
	THR <sub>600s</sub> , MJ	7.1
	LFS <sub>10</sub> , m	< Edge of Specimen
	SMOGR <sub>A</sub> , m <sup>2</sup> /s <sup>2</sup>	1
	TSP <sub>600s</sub> , m <sup>2</sup>	19
EN ISO 11925-2:2010 Exposure=30 s	Flaming Droplets/ Particles	No flaming droplets/particles occur within 600s
EN ISO 11925-2:2010 Exposure=30 s	FS, mm	32
<b>Note:</b> 1. This test was conducted at the external approved facility, located at Guangzhou. 2. The samples were tested free standing at a distance of 80 mm from a 9 mm thick calcium silicate board. The density of the calcium silicate board was 900 Kg/m <sup>3</sup> .		
<b>3 CLASSIFICATION</b>		
The classification has been carried out in accordance with EN 13501-1:2007+A1:2009.		
Fire behaviour	Smoke production	Flaming Droplets
B	s	d
Reaction to fire classification: B - s <sub>1</sub> , d <sub>0</sub>		
Intertek Testing Services Ltd., Shanghai No.7 Building, No. 6968 Daye Road, Fengxian District, Shanghai Tel: 021-61136116 Fax: 021-61189921 Website: www.intertek.com Report template version : 2016/1/1 Page 3 of 5		





AZ Greenins Deck composite timber provides steady durability to withstand the humidity level and tropical weather conditions in Singapore. With substantial versatility, it is not simply an alternative timber decking product as it also caters to other function such as wall claddings, trellises, benches, Venetian blinds dividers and sun-shades. Due to it's make up of up to 60% recycled wood content, we have been accredited with the Singapore Green Label Certificate. AZ Greenins Deck strives to provide a wide variety of structural options to complement any architect's creative vision and any builder's needs.



# ATTRIBUTES

- ✓ **Water resistant, Non-Slip and Fire retardant**

Tested to Singapore standards, our composite timber has achieved fire rating as well as passing crucial water and slip related testing.

- ✓ **Insect and fungus resistant (in most environments)**

Although natural wood is subject to the effects of termites and the corrosion caused by mould and fungus, composite timber is 100% termite proof, and it's chemical composition protects it against fungus.

- ✓ **Free from natural defects e.g. No Splintering**

Splinters and cracking are a big safety hazard, as well as an eye sore.

Composite timber does not splinter and even in extreme weather conditions will not twist and crack like natural wood.

- ✓ **Resistant to weathering (UV stable)**

- ✓ **Recyclable - Singaporean Green Label Certified**

Our composite timber is made up of approximately 60% recycled material

- ✓ **High impact strength / Light weight**

Composite timber manages to combine the durability of high impact strength and loading, while also remaining light weight making it safer and easier to install.

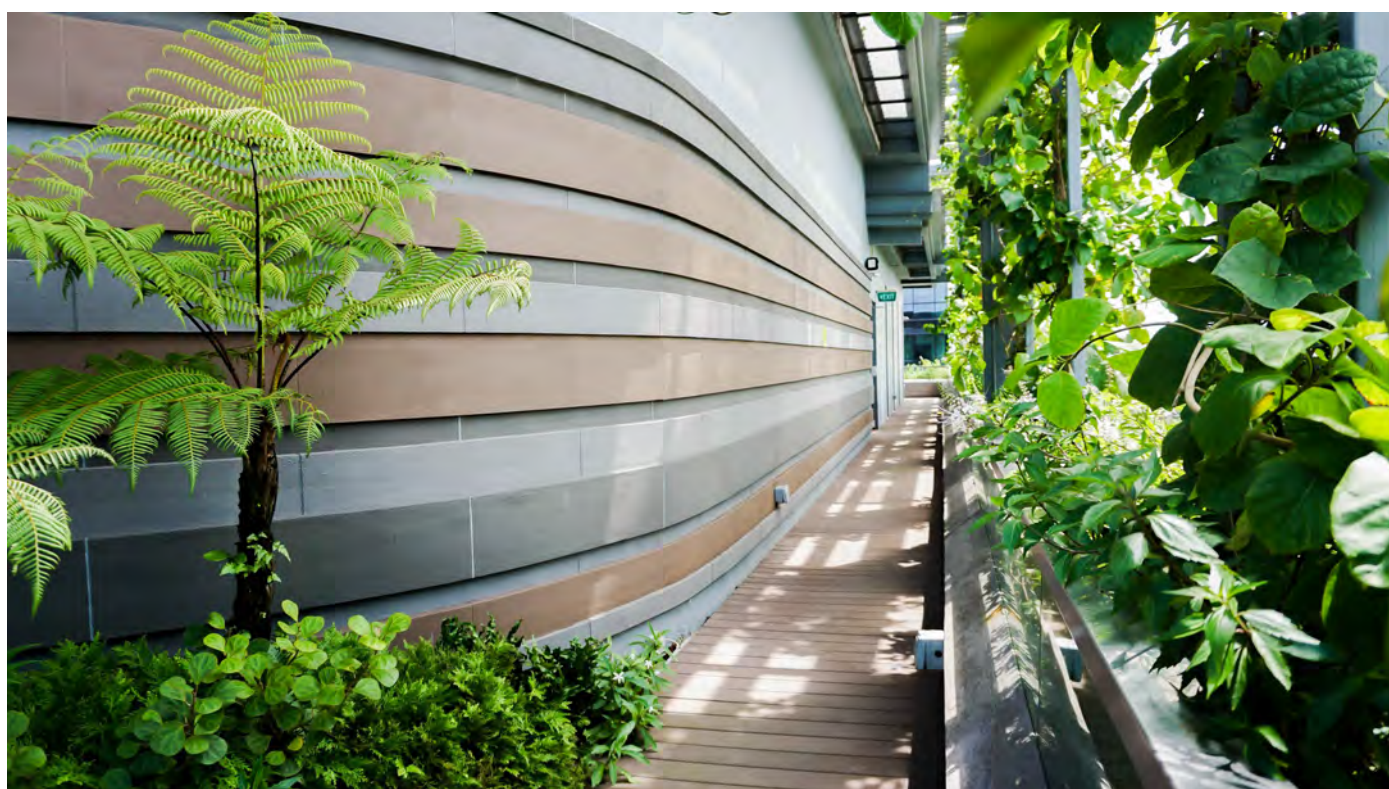
- ✓ **Close resemblance to natural wood**

With a composition that includes 60% recycled wood waste, composite timber manages to keep it's natural look and feel, while negating all the negative and expensive costs of real wood.

- ✓ **Colour Retention (Varies based on colour selection)**

All wood exposed to the sun over time will have it's colour fade, requiring constant varnishing and cleaning. Because of its natural wood make up composite timber has minor colour adjustments, but due to its pigmentation will retain a stronger, nicer colour.

	AZ Greenins Deck Composite Wood	Natural Wood
Water Resistance	Strong	Bad
Fire Resistance	Fire Resistant	Flammable
Deformation	Minimal (Low)	High (Cracks and warping)
Termite Resistance	Excellent	Low
Maintenance Cost	Low	High (Varnish, cleaning, replacement)
Environmental Effect	Low (Recyclable)	High (Deforestation)
Finishes	Finished product, homogenous, no sanding or varnish required	Grinding, Sanding, Varnishing req. Affected by weather conditions
Safety	Non-slip, splinter free, fire safe.	Splinters common, flammable and can slip
Decking Support	3mm anodized aluminum batten (anti corrosive)	Balau wood, decay over time



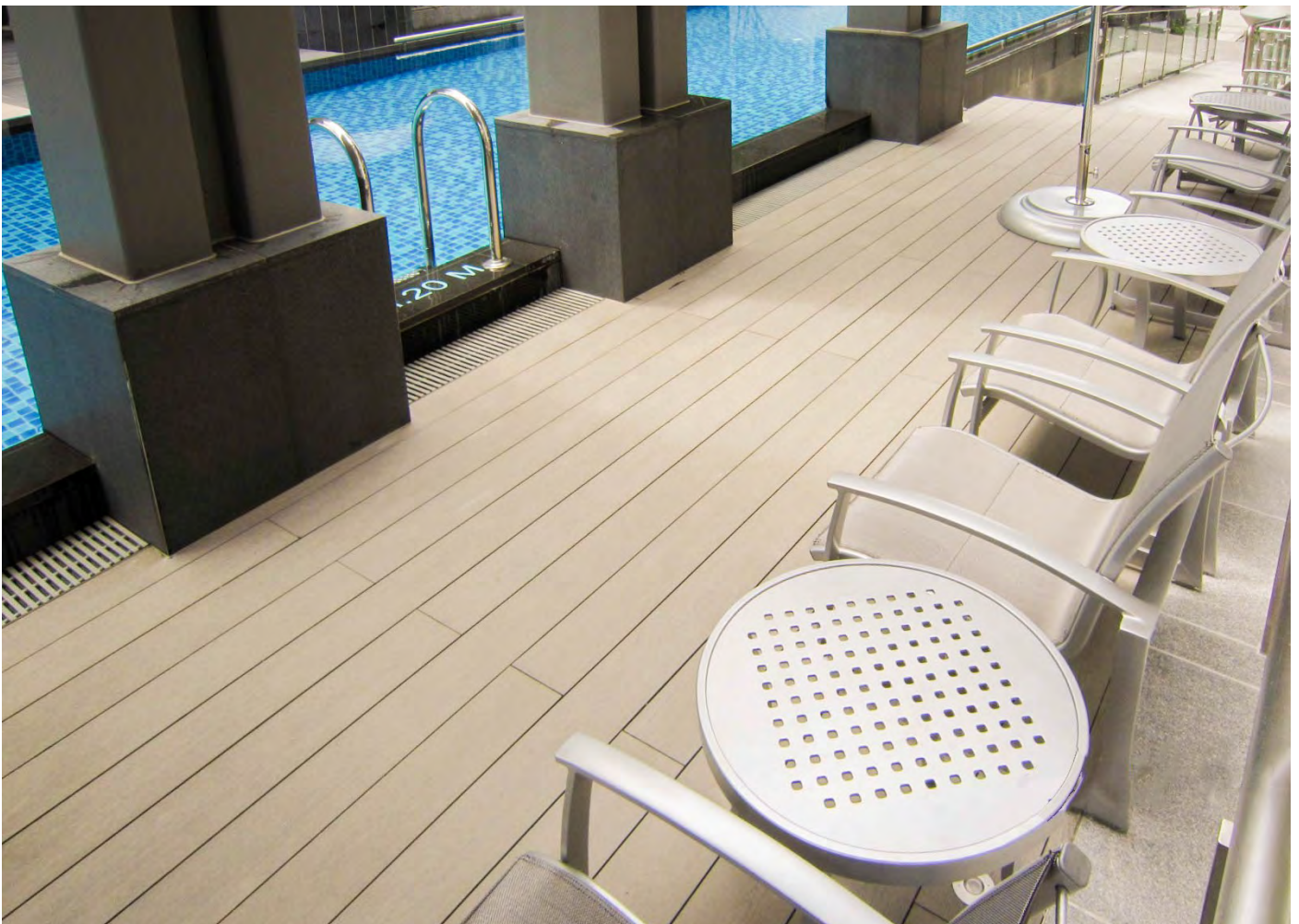


# DECKING

Timber decking is a popular flooring option in modern landscaping for both indoor and outdoor areas, it brings a touch of nature and style with it. However timber products are no longer an eco friendly alternative, and with high flammability, splintering, twisting and warping, it becomes very costly to yourself, and the planet, to use natural timber. AZ Greenins Deck is a composite timber material engineered to withstand all of nature's harshest conditions, while preserving the look and feel of natural wood. By incorporating 60% recycled wood waste material, hardeners and PVC resins, Greenins Deck is both eco friendly while also tougher than natural wood. It has earned the INTERTEK EN 13501-1 Fire Rating, making it safe and non flammable unlike natural wood. With a wide range of colours, textures and sizes, and the best durability, think Greenins Deck for your next landscaping project.









Our decking is installed on a series of anodized aluminum battens, a better alternative than natural balau wood planks which decay over time. AZ Greenins Deck Composite Planks are then secured on to the battens by the Allianz International (AZ) plastic clip system, no drilling of the wood is required. Drilling holes into wooden planks causes small cracks and splintering which worsens over time, leading to maintenance costs and safety hazards. However the AZ clip and groove system means our planks have a flush finish without any holes or splits, it also give allowance for the planks to expand and contract. Due to the 60% natural wood composition, our planks still expand and contract like natural wood, but with our installation method and PVC resin composition, our wood stays stronger for longer.











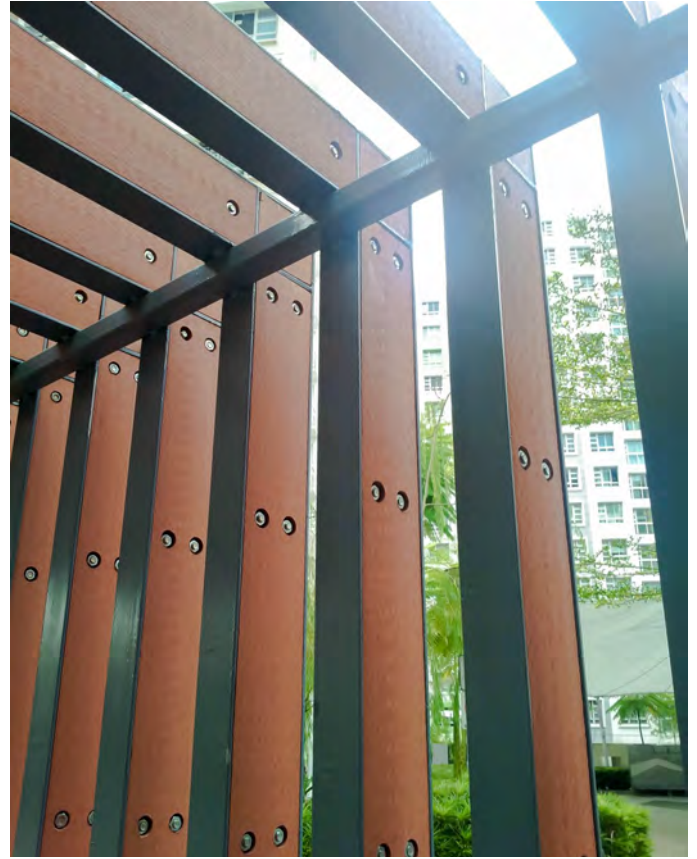


# *STAIRCASE & TRELLIS*

Staircases & trellises are great creative opportunities to add a “touch of Zen” to both indoor and outdoor spaces. The material you choose however must have the aesthetics to create a pleasant design, while also having the strength to support users. AZ Greenins Deck is perfect for this combination. By combining the natural look and feel of wood with tough durability, our composite timber creates the perfect balance for staircases and trellises. For trellises our wood is cladded onto steel trellis structures by our bolt and nut system, for staircases there are a variety of options, most common of all will be installation onto a pre existing steel frame. Applications are suitable for residential and commercial use, with thicker, stronger profiles available for your custom needs.







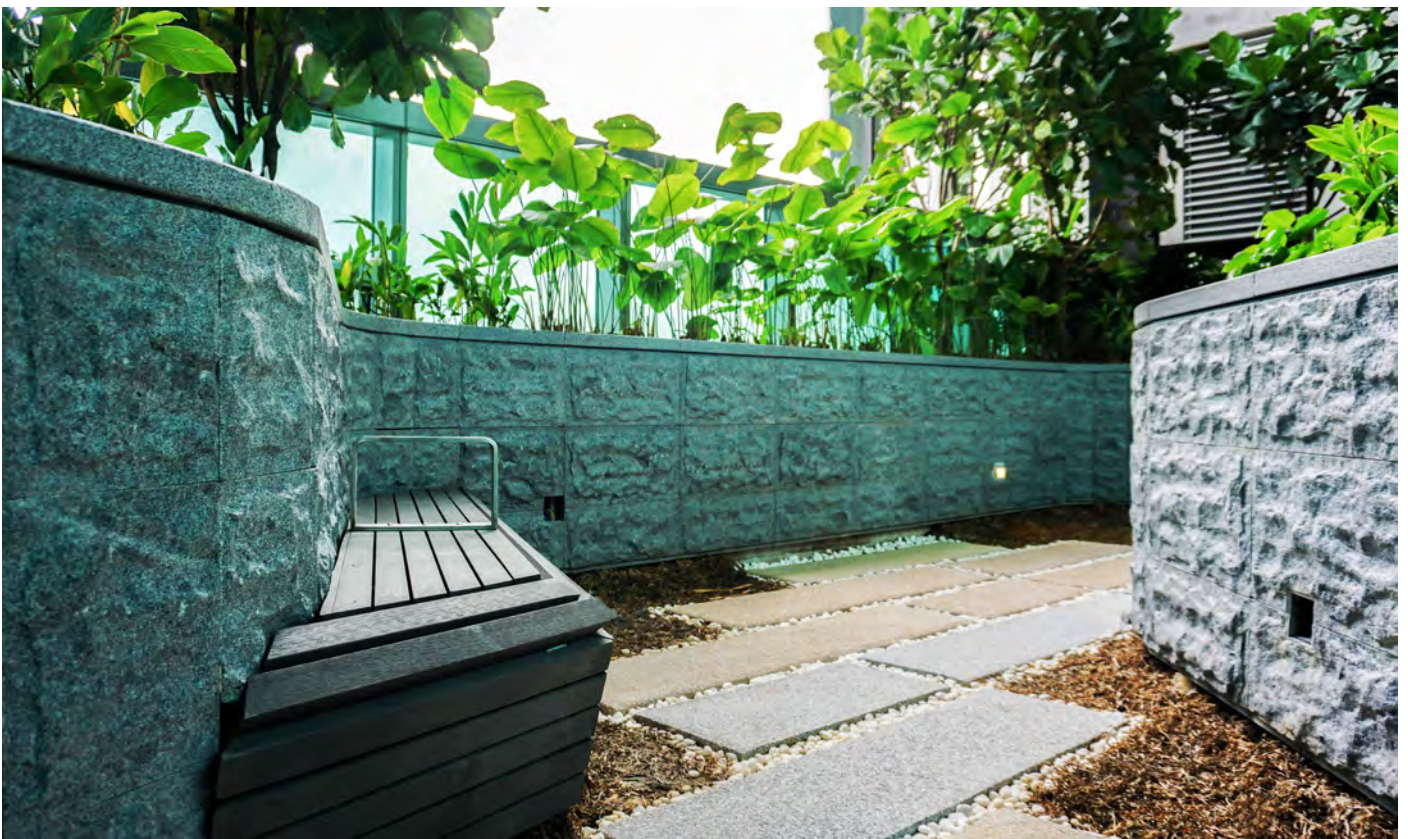


# *BENCHES*

AZ Greenins Deck Composite timber creates the perfect natural finish for benches and seating. We utilise a variety of profiles to ensure the bench design is smooth and natural. The durability of AZ Greenins wood is especially important when dealing with benches and seating areas. Sitting areas are designed for comfort and relaxation, but natural wood tends to splinter and crack, which can injure and render the bench unusable. With our composite timber we provide peace of mind, as our wood does not splinter and crack like natural wood, making a natural seating solution with more comfort and longevity. For more information on our profiles, colours and textures, contact us!







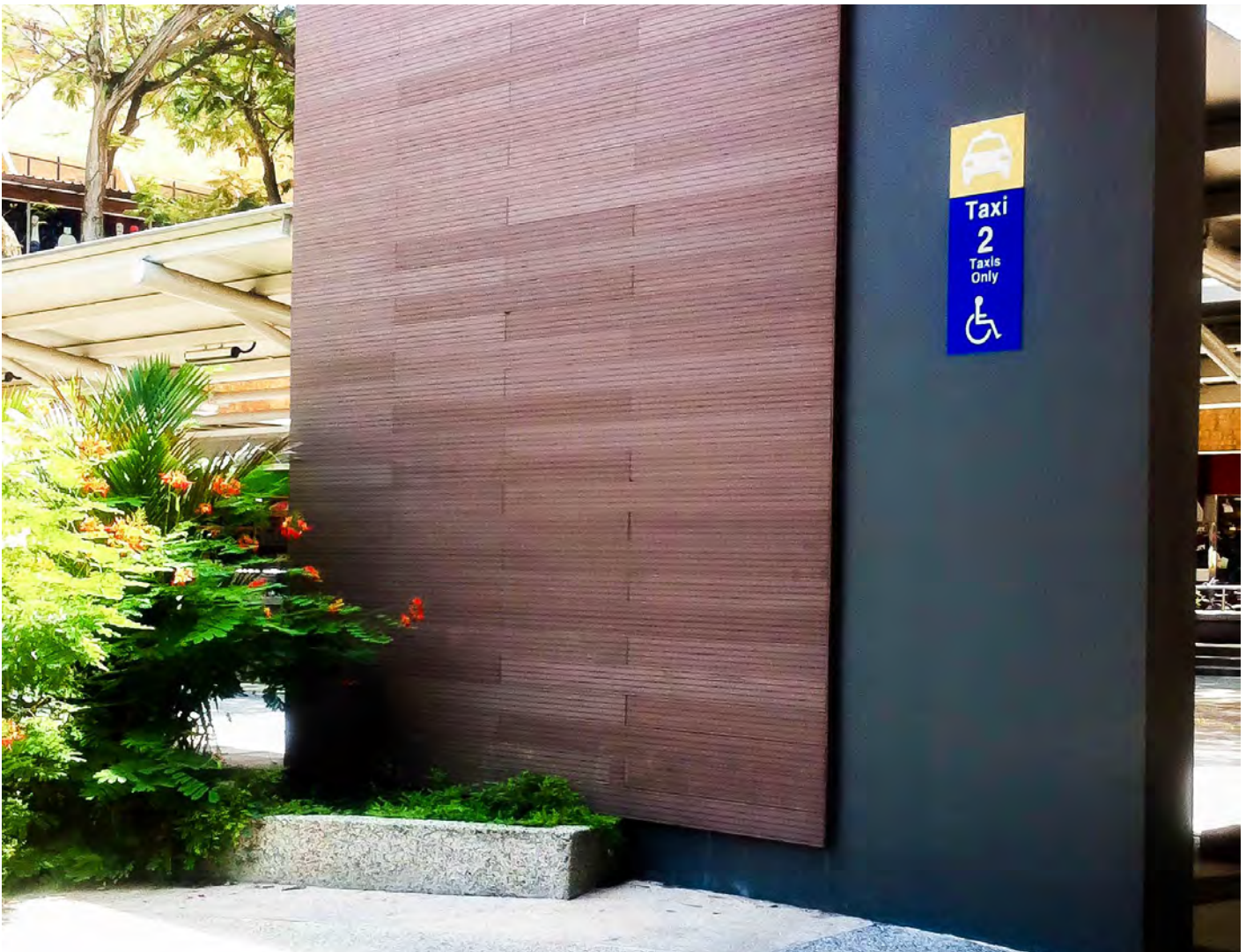






# WALL CLADDING

Wall cladding can be achieved using our special tongue and groove profile or our standard fixing method, subject to architect and consultant selection. Due to the nature of cladding being installed vertically, we have a range of lighter profiles that will be safer for suspended installation, while still providing the same natural, flush design. Wall claddings can be used as a decorative and functional feature, contributing to the intended aesthetics of a project. Whether it's a small wall in your garden at home or a feature wall at a commercial centre, think AZ Green Deck for your next wall space.









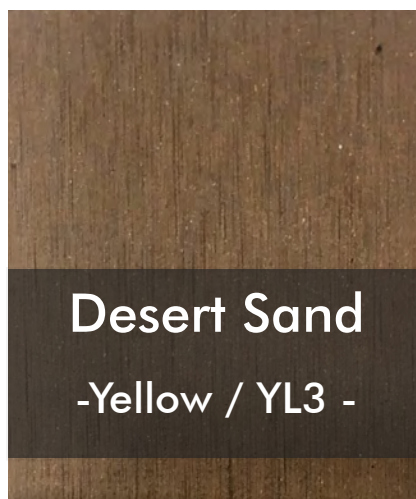
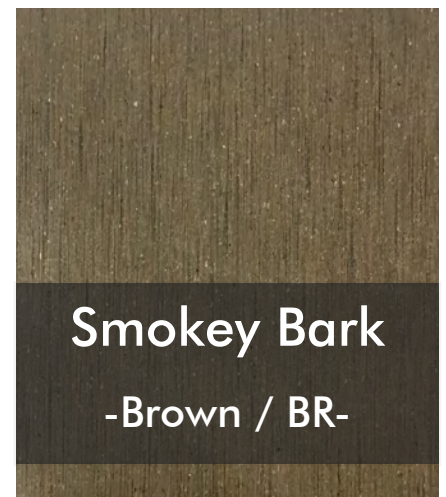
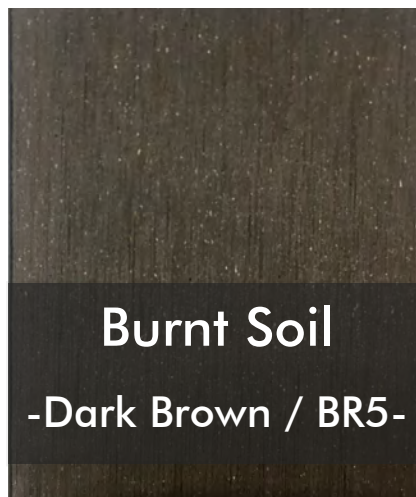
# *AZ GREENINS SPECIFICATION*



# DESIGN

Not every project is the same, that is why we offer a diverse range of colours and textures to meet every aesthetic and practical need. Our wood undergoes a pigmentation process during production, rather than a plastic coat or paint, imbuing the colour into the wood. Natural timber requires constant varnishing and washing to keep its colour consistent and even, which can be costly and time consuming. AZ Green Deck planks only require a simple wash with water and do not require constant varnishing and upkeep.

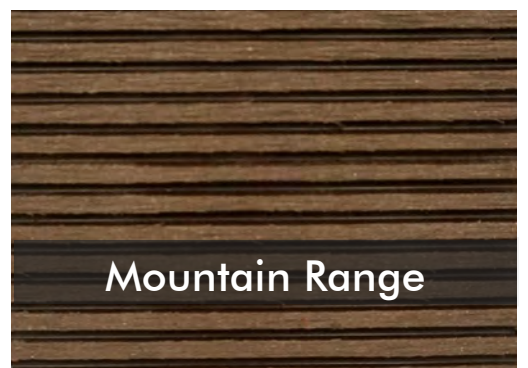
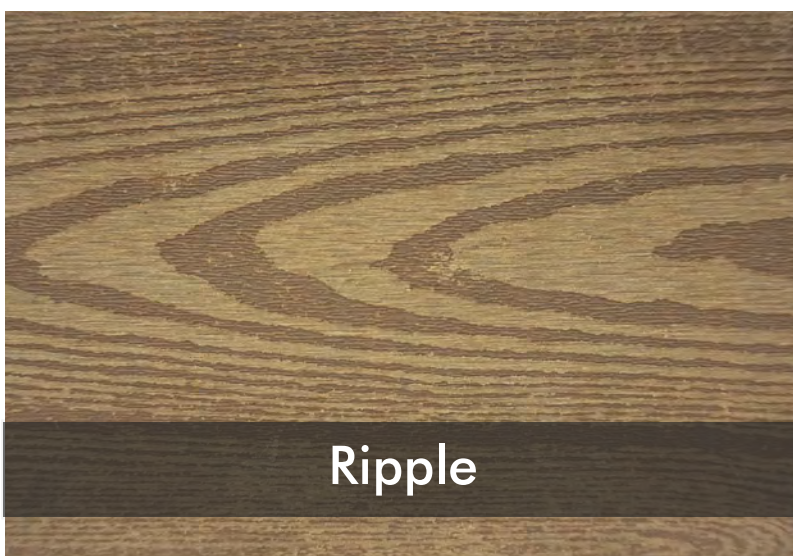
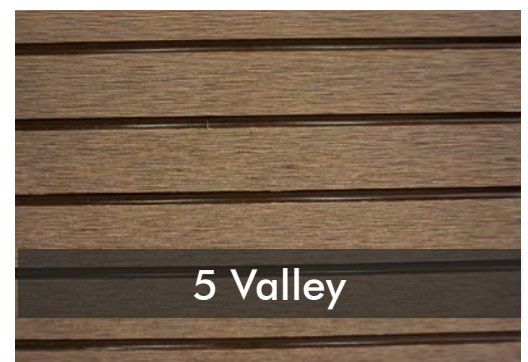
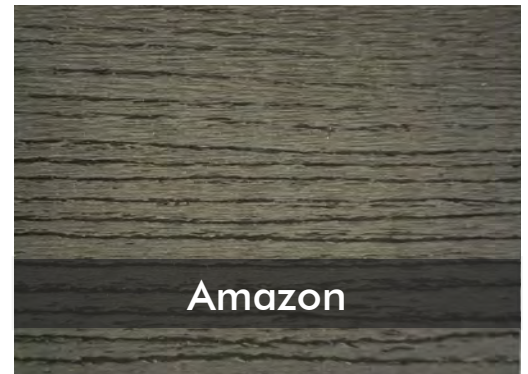
Our colour range consists of earthy tones that rather than attempting to copy the colour of natural timber, emulate their own natural feel.





In order to cater to the many creative visions landscape themes of architects, residents and developers, we also offer a wide range of texture profiles. These profiles can range from simple, sanding finishes, to elegant wood grain styles which help to enhance the level of creativity and design in modern architecture.

Unlike natural wood which can only have its colour altered slightly through varnish or paint, our wood is made to suit your needs and your design intent. All of our colours can be combined with all of our textures, and we can customize to your liking! For more information or to see a sample, come by our office or call to arrange a meeting.



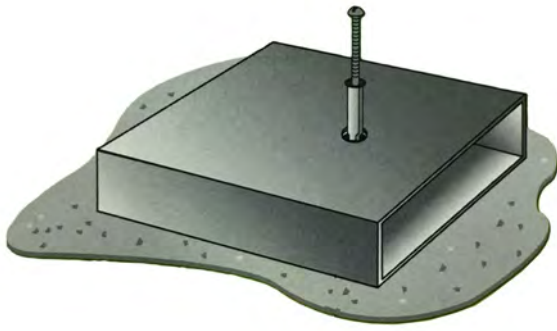
# *INSTALLATION*

Skilled and precise installation is imperative not just so that your timber can look it can look at it's best, but also so that it can last as long as possible. Our wood is installed on anodized aluminium battens which are bolted down at 300mm intervals to provide sturdy support that will not weaken like natural wood supports. Using our clip and groove system, the battens, clips and screws are completely hidden and no drilling of the actual plank is required as the wood is firmly held in place. This prevents cracking on the surface near the drill holes and also provides a safer surface free of any protruding metal. While this holds the planks firmly in place, the clips also allow for expansion and contraction of the planks during heat or rain, which occurs due to their recycled wood content. The result is a perfectly level, smooth surface free of screws, holes and metal. For edges, especially around areas like swimming pools and balconies, we use our capping method to nicely flush off the edge.

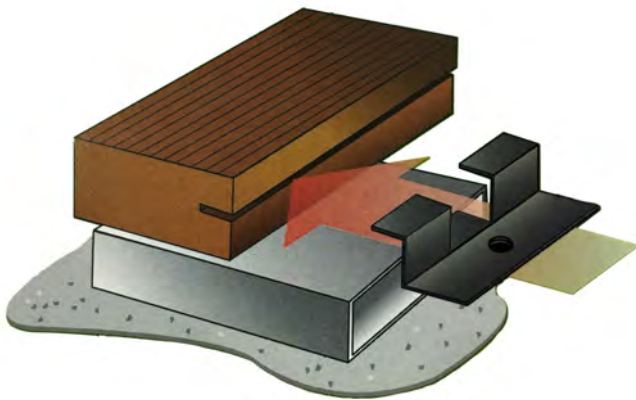
We have provided a simple diagram to show how our system works, as well as architectural cross section details. For more information please contact us for a discussion.



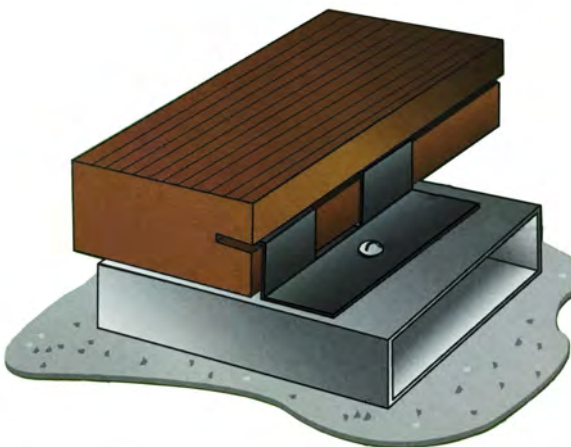




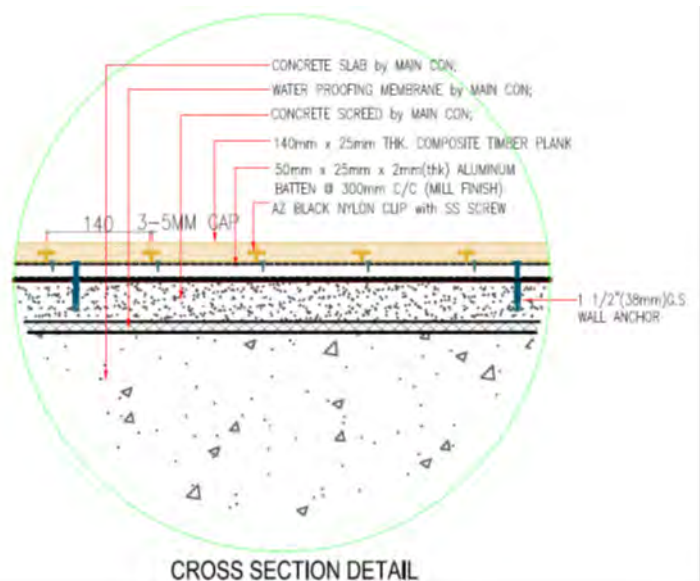
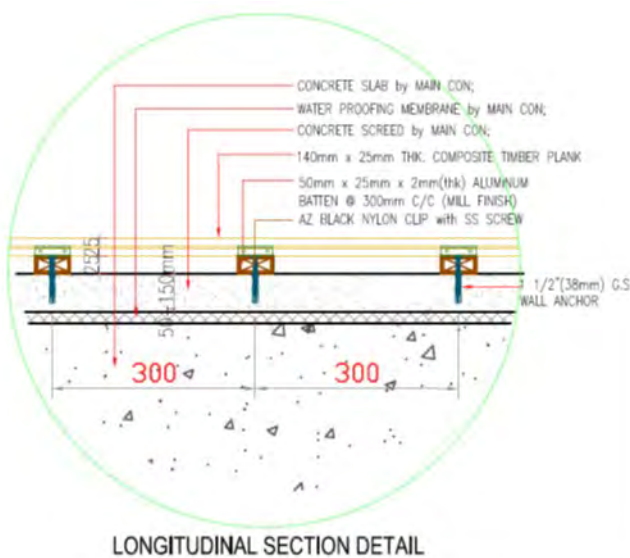
Our aluminium battens are held in place by 38mm Anchor bolts that secure onto the concrete surface below.



Rather than drill directly into the wood to secure it in place, we use a nylon plastic clip and groove system to securely fasten the plank without having to direct drill onto it's surface.



We then secure then plastic clip into the batten which in turn firmly holds the composite timber in place. This process is repeated to create a beautiful decking area with all screws and fasteners hidden away.



# *SPECIFICATIONS & WARRANTY*

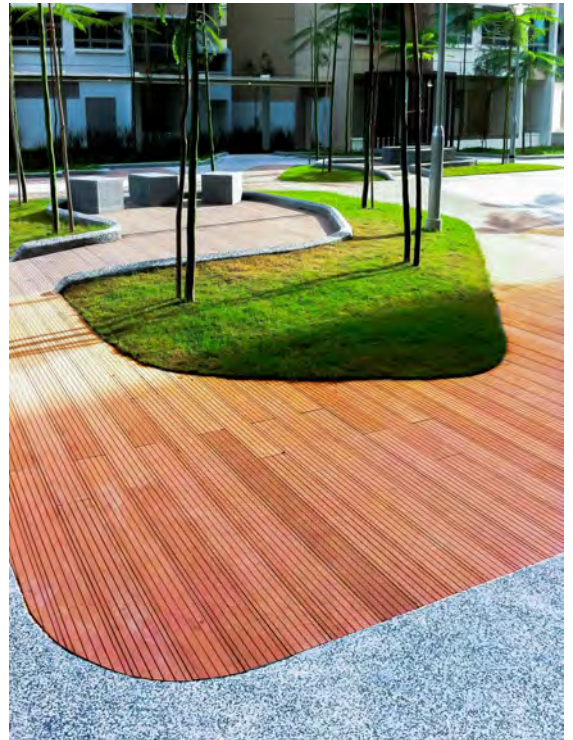
Alliancz International & AZ Greenins Deck is dedicated to after sales maintenance and therefore offers 18 months warranty against manufacturer defects for our timber products. AZ Greenins Deck is able to re-surface up to 8mm of our sanding profile decking should there be any accidental scratching as the profile is solid and homogenous.

AZ Greenins Deck identifies itself as the substitution material for timber products and it offers a close resemblance to natural wood. AZ Greenins Deck products can be nailed, screwed, stapled, printed, sawed and glued.

Due to its composition of up to 60% recycled wood material, AZ Greenins Deck Composite Wood is subject to contraction and/or expansion of approximately 1.5mm to 2mm linear meter length (length side) and 1mm to 1.5mm on its overall width. Space is accommodated on either side during installation for this movement along with the aid of the clip system.

Our skilled in-house carpenters, under the close supervision of our site supervisor and manager, produce high quality workmanship and install all of AZ Greenins Deck products and accompanying structural support.

Alliancz International and AZ Greenins Deck has the appropriate resources available to customize designs corresponding to given architect illustrations. Some of our completed customized installations include fan-shaped decking, detailed curvatures, diagonal plank installation and allotted space for lighting effects.





## DESCRIPTION

## AZ GREENINS DECK COMPOSITE WOOD

<b>Material</b>	Supremely compressed recycled wood waste with PVC resins, stabilizers, additives and colour pigmentations
<b>Aesthetically</b>	Solid and Homogenous – Real wood lookalike
<b>Support/ Batten Distance</b>	3mm thick anodized aluminum anticorrosion Installed @300mm CTC with 6 x 1-1/2" wall anchor bolt with minimum thickness of 50mm concrete screed
<b>Deformation</b>	Minimal deformation – Max 2-4mm per meter depending on weather temperature
<b>Fire Surface &amp; Smoke Test</b>	Passed and achieved - INTERTEK EN 13501-1 Fire & Smoke Test
<b>Loading Test</b>	17.49 kN/m <sup>2</sup>
<b>Water Absorption</b>	0.3 - 0.6% maximum
<b>Size and finishes</b>	Wide range of sizes and profiles Standard sizing: 140 x 25mm Natural Wood Colour Range [6 Main Choices]
<b>Installation Methods, details of Access Panel</b>	AZ Clip-On system for decking. All access panels are framed with Aluminum angle brackets throughout all edges.
<b>Quality Workmanship</b>	100% in-house installers Skilled carpenters – Organization chart available readily upon request
<b>Support for raised floor height</b>	38mm anchor bolt on Concrete Stumps with PVC pipe casing or Pedestal system or Steel structural support
<b>Finishes at corner or facial edges at pools and steps</b>	Miter joints subject - (Concealed fixing countersunk SS Screw)



## **CONTACT US**

**ALLIANCZ INTERNATIONAL PTE LTD**

**Address: 40 Ubi Crescent, #01-02, Ubi Techpark, Singapore 408567**

**Website: [www.allianczinternational.com](http://www.allianczinternational.com)**

**Email: [enquiry@allianczinternational.com](mailto:enquiry@allianczinternational.com)**

**Telephone: 6743 3313**



**Alliancz International Pte Ltd**