



ALLIANCZ INTERNATIONAL PTE LTD

PRODUCT CATALOGUE



Alliancz International Pte Ltd

CONTENT PAGE

| | |
|--|----|
| WHAT IS AZIRONMONGERY? | 5 |
| WHY CHOOSE AZIRONMONGERY? | 5 |
| BENEFITS | 6 |
| ONE SINGLE KEY | 7 |
| AZIRONMONGERY MORTISE LOCK CATALOGUE | 8 |
| AZIRONMONGERY HINGES CATALOGUE | 13 |
| AZIRONMONGERY CYLINDER CATALOGUE | 16 |
| AZIRONMONGERY DOOR STOPPERS CATALOGUE | 20 |
| AZIRONMONGERY DOOR CLOSERS CATALOGUE | 24 |
| AZ IRONMONGERY DOOR CLOSER ACCESSORIES | 31 |
| AZIRONMONGERY FLUSH BOLTS CATALOGUE | 33 |
| AZIRONMONGERY GLASSDOOR HARDWARE CATALOGUE | 36 |
| AZIRONMONGERY DOOR ACCESSORIES CATALOGUE | 38 |
| AZIRONMONGERY PULL HANDLE CATALOGUE | 42 |

Disclaimer

Information in this catalogue is correct at the time of printing and valid but may be subject to change.

This material does not purport to constitute legal or professional advice. Alliancz accepts no responsibility for and makes no representations, whether express or implied, as to the accuracy or reliability in any respect of any material in this publication. Except to the extent mandated otherwise by legislation, Alliancz does not accept responsibility for the consequences of any reliance which may be placed on this material by any person.

Alliancz will not be liable to you or to any other person for any loss or damage (including direct, consequential or economic loss or damage) however caused and whether by negligence or otherwise which may result directly or indirectly from the use of this publication.

Copyright Alliancz International
© Alliancz International 2018.

Except as permitted by the Copyright Act, this material may not be reproduced, stored or transmitted without the permission of the copyright owner. All enquiries must be directed to Alliancz International.

Published by Alliancz International 2018.

WHAT IS AZIRONMONGERY?

AZIronmongery is an in-house developed security system brand that plays an intrinsic role in regional security technology. Alliancz International primarily focuses on supplying premium security solutions to our customers at affordable prices, in both commercial and residential projects. At Alliancz International we aim to work cohesively on each project undertaken and provide a customised solution.

WHY CHOOSE AZIRONMONGERY?

Our core brand values are security, dependability and innovation. With an established reputation that stems almost a decade long supplying security systems; AZIronmongery have since become the preferred security system provider among a myriad of prestigious hotel operators and developers.

AZIronmongery select the ideal security system to suit individual project based needs, with a wide variety of products including door stops, handles and additional accessories to compliment.



BENEFITS

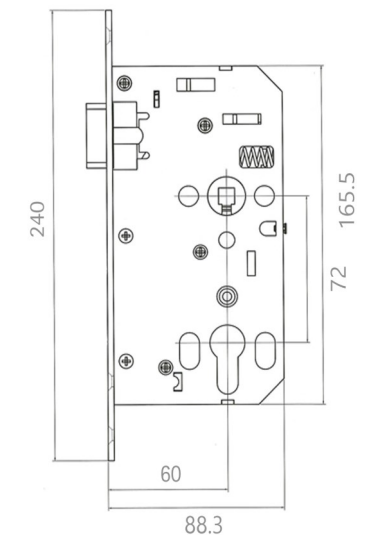
- One stop shop for both Ironmongery and door solutions
- Preferred solution
- Suitable for commercial and residential projects
- Value for money packages
- Continual dedication to develop new and innovative solutions
- Customisable designs

AZIRONMONGERY MORTISE LOCK CATALOGUE

The mortise lock body is the backbone of door security, it is what combines the cylinder, lock and handle functions into a secure, door locking solution. But of course not one size fits all, so we offer a wide range of mortise lock bodies that provide a wide variety of security at different levels. All of our mortise locks comply with SS:332 fire safety compliance.

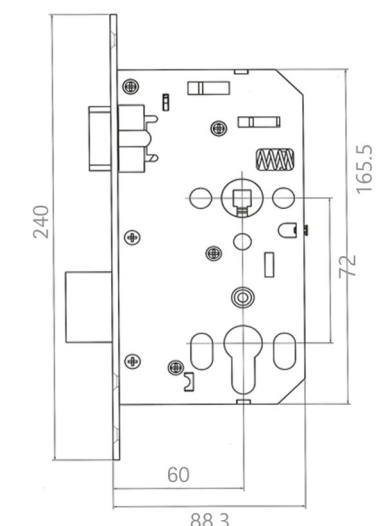
AZ 7005/60 NIGHTLATCH

Locks the door upon closing, can be opened from the inside, key required on the outside. Standard dimensions, complete with strike plate (universal for left and right handed doors) and box as standard.



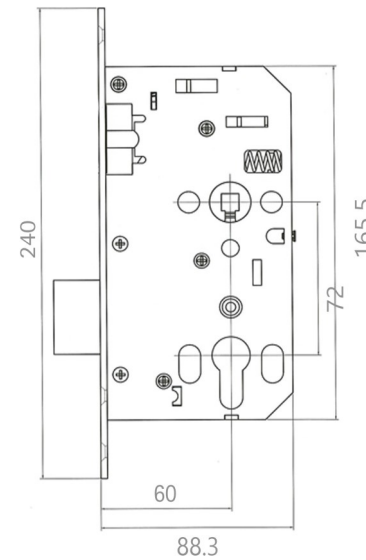
AZ 7003/60 SASHLOCK

Deadbolt and latch incorporated into the same lock case. Latch operated by handle, deadbolt operated by key and/or thumb turn. Can be used with any range of AZ cylinders for a range of locking options.



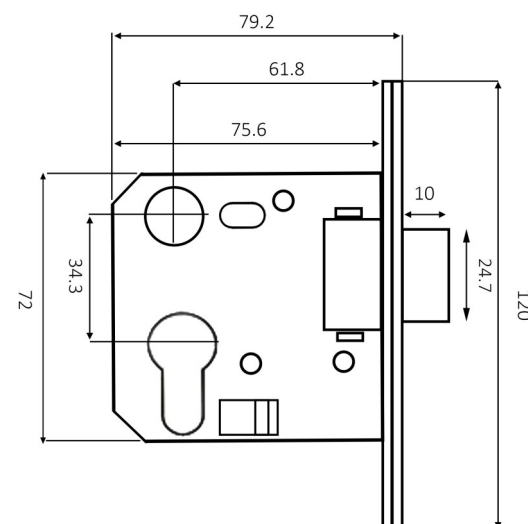
AZ 7020/60 DEADLOCK

Heavy duty mortise lock for ultimate security. Double throw deadlock withstanding up to 490DaN. Standard Dimensions, complete with strike plate (universal for left and right handed doors) and box as standard.



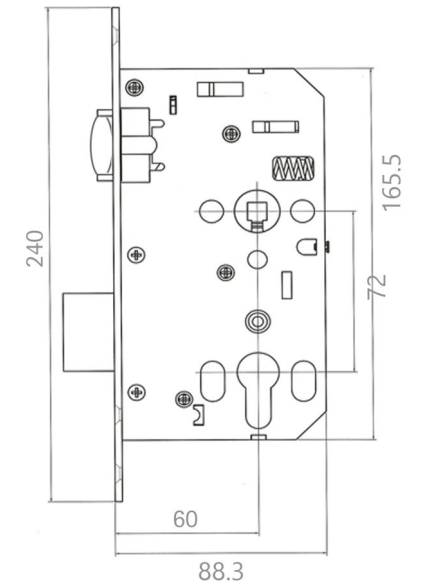
AZ 3213/60 NIGHTLATCH

Medium size modified to be used for smaller doors such as riser and toilet doors, the smaller size allows it to easily suit any smaller door and smaller cylinders, while also providing the same level of security.



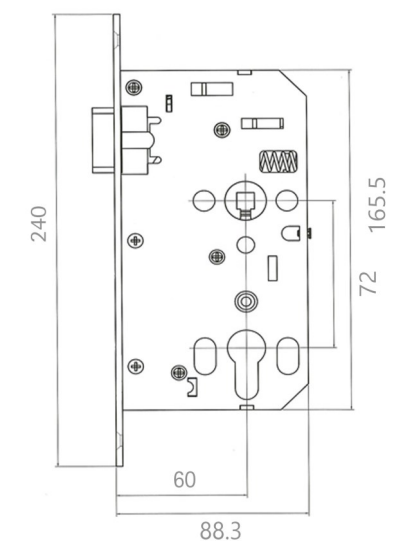
AZ 7521/60 ROLLER LOCK

Roller bolt allowing for even smoother pull and push function when operating door. Deadlock for maximum security.



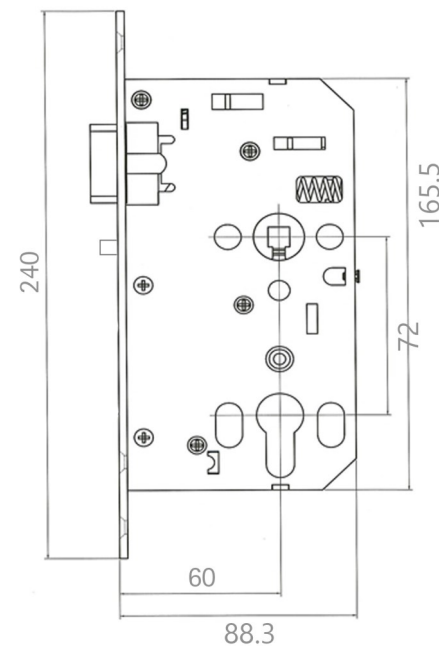
AZ 7001/60 PASSAGE LOCK

The passage lock has no deadbolt and does not require a cylinder for any locking, it is always free on both side and simply requires a handle on each side for latch operation.



AZ 7037/60 CLASSROOM

Latch bolt retracted by handle or knob, inside is always free (to escape) however key outside lock & unlock latch). This is perfect for allowing people inside to leave care-free, but provides security by requiring a key to enter. This lock is also sometimes referred to as mechanical time lock as it can convert to a passage mode when required.



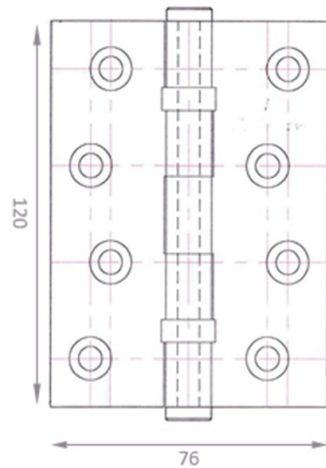
AZIRONMONGERY HINGES CATALOGUE



Although considered a simple component of any door, the hinge is one of the most important components of all door hardware. A high security door that falls off it's hinges is not very effective, which is why it is so important to choose the right hinge to suit your needs. Factors like door weight, height, core type, function and swing direction all play pivotal roles in deciding which hinge is the right one for the job. And then you can start to consider exposed vs. concealed! If you need any assistance to understand your needs better, please do not hesitate to contact us.

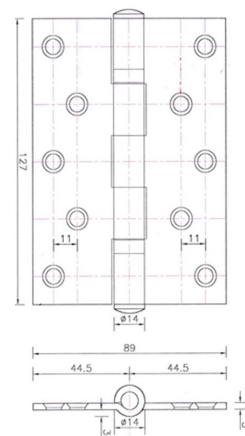
Size: 102X76X2mm 2BB SS Hinge

Finish: Available in SSS, SS304 and SS316. SS332 Standard



Size: 127X89X3mm 2BB SS Hinge

Finish: Available in SSS, SS304 and SS316. SS332 Standard



Size: 152X100X4mm 4BB SS Hinge

Finish: Available in SSS, SS304 and SS316.

SS332 Standard



CC1900 Heavy Duty Concealed Pivot Hinge

SS332 Standard



ZA Concealed Hinge

Available in a variety of sizes

SS332 Standard

| Article No. | SIZE (LxWxT) |
|-------------|--------------|
| ZA-CH03 | 13x44.5 |
| ZA-CH04 | 13.60 |
| ZA-CH05 | 16x70 |
| ZA-CH06 | 19x95 |
| ZA-CH07 | 25x117.5 |
| ZA-CH08 | 28.5x117.5 |
| ZA-CH09 | 35x140 |

AZIRONMONGERY

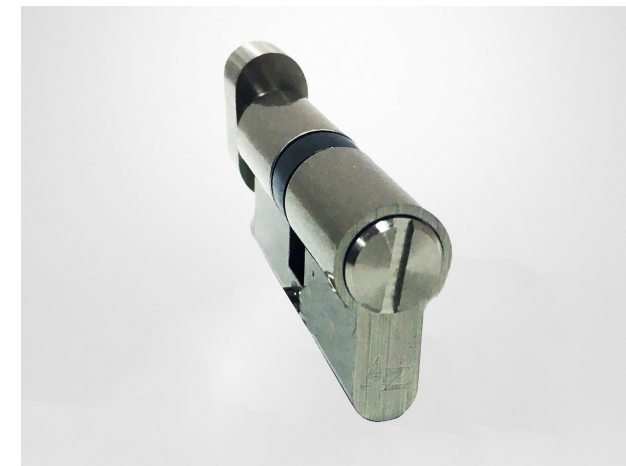
CYLINDERS

CATALOGUE

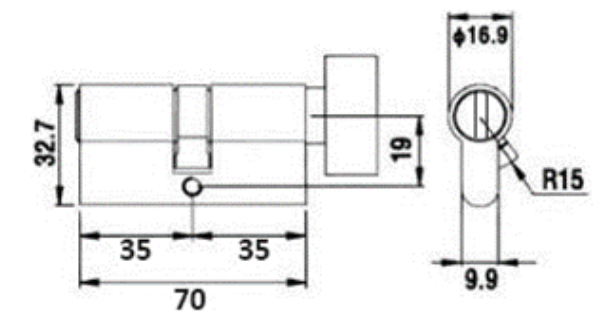
AZIronmongery provides a complete range of cylinders which can be used with our lock bodies and lever handles to make a complete locking set for your door. Our cylinders provide a variety of security levels, as well as varying designs to suit different types of doors.

All cylinders are available in longer lengths up to 110mm (with a 5mm extension on each side), for thicker doors.

AZ 212.70 PRIVACY CYLINDER



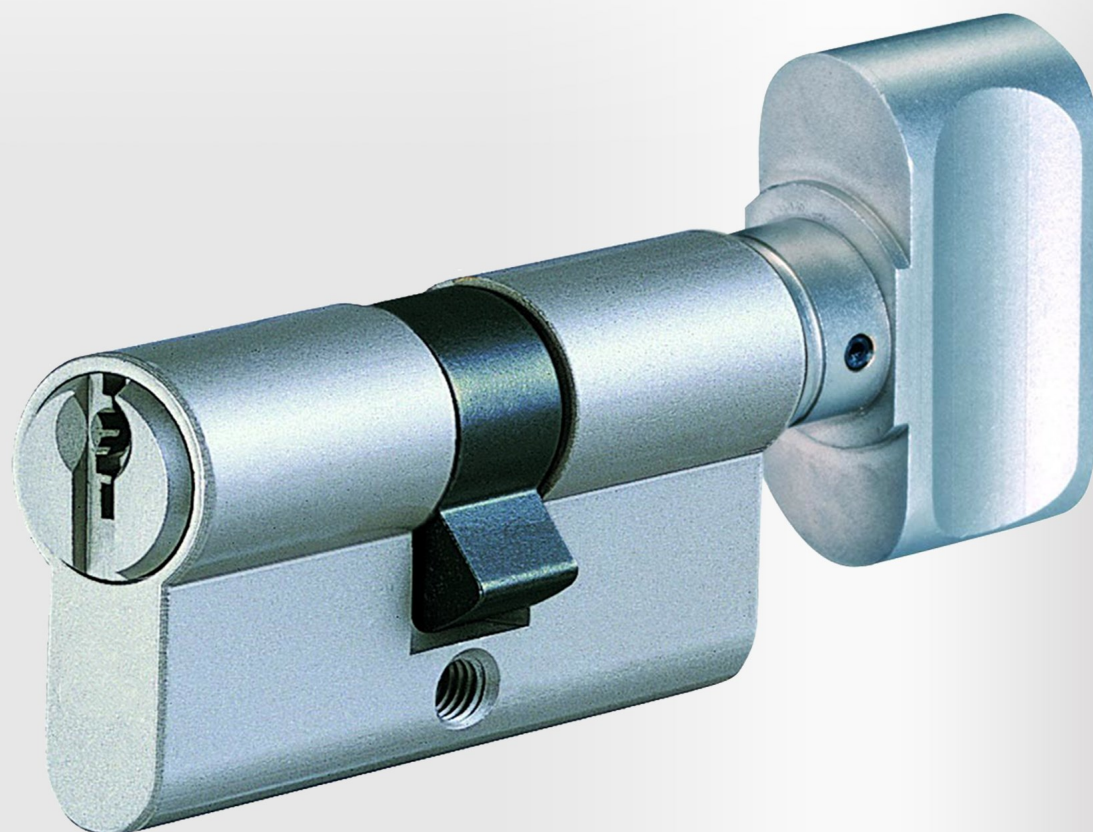
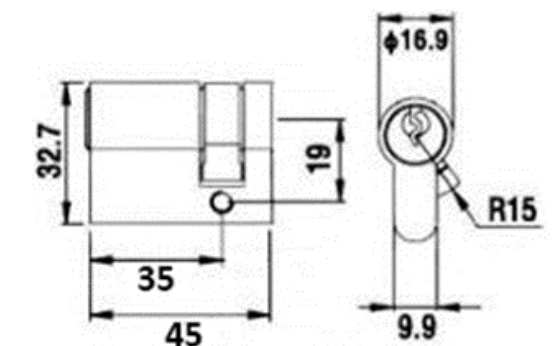
Thumb turn inside, coin slot outside. Smooth retraction of deadbolt with active thumb turn in side.



AZ 210.45 SINGLE CYLINDER



Single cylinders only provide access from one side of the door, with the keyhole exposed on the active side. These cylinders are ideal for doors such as closets or risers, when the inside does not require a separate function.

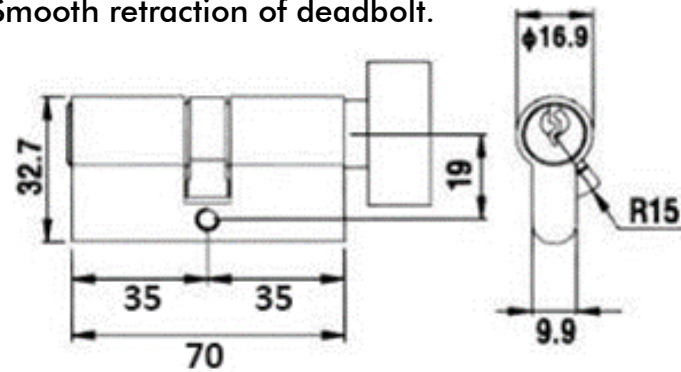


AZ 215.70 THUMBTURN CYLINDER



Key hole outside and thumb turn inside allows maximum security coupled with convenience.

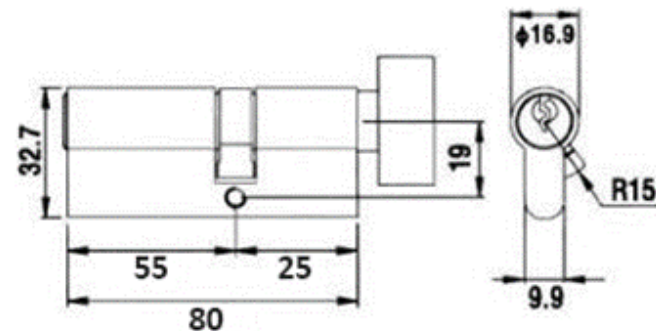
Smooth retraction of deadbolt.



AZ 55/25 OFFSET KEY CYLINDER



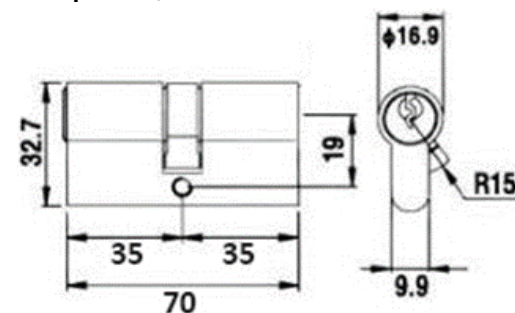
Offset cylinder with extended length allows for the cylinder to work even in fire proof or sound proof doors, which are much thicker.



AZ 310.70 DOUBLE CYLINDER



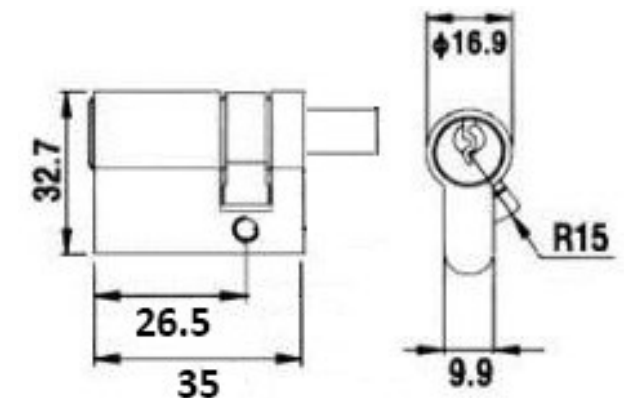
Key required on both sides of cylinder, used on doors with glass panels so if they glass is broken a key is still required,



AZ 26.5MM HALF CYLINDER



Our half cylinder is specially designed for especially thin doors and smaller lock areas. At only 26.5mm it is a single sided cylinder only showing a keyhole on the outside of the door. Perfect for closets and sliding doors.

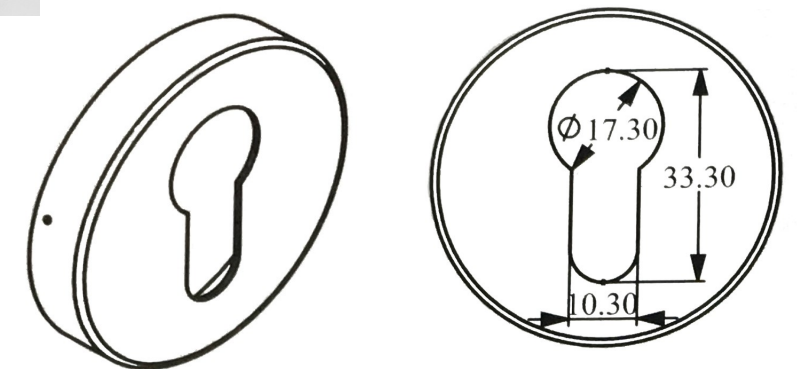


8MM ESCUTCHEON

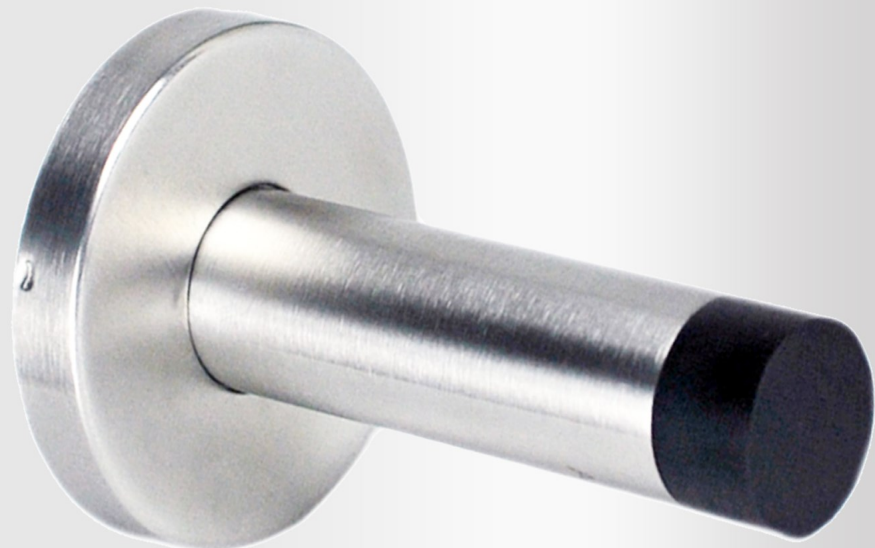


The escutcheon provides a flush finish for all Euro profile cylinders, our 8mm escutcheons can be produced in SS304 or SS316, and are perfectly suited to all AZIronmongery cylinders.

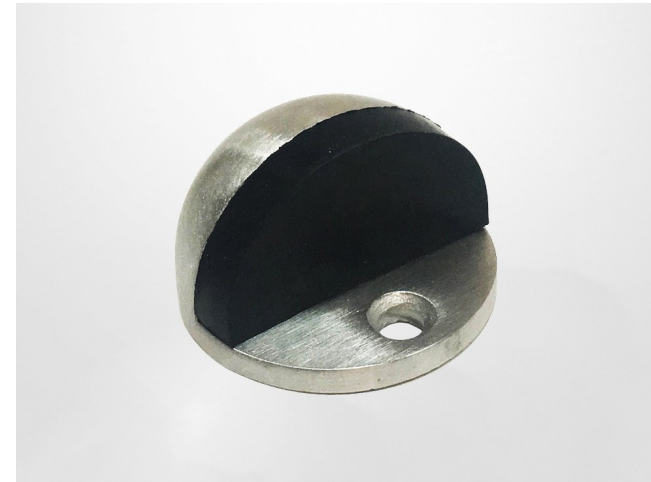
Other thicknesses of 4 to 10mm are also available upon request.



AZIRONMONGERY DOOR STOPPERS CATALOGUE



DS632 SN DOME SHAPE DOOR STOP



This ergonomically shaped door stop is perfect for a flush finish on your floor. The rubber pad creates a gentle cushion for your door but provides sturdy resistance if the door is thrown open. Can also be installed on the roof for full length swivel doors.

DH005SS FLOOR MOUNTED DOOR STOPPER



DH005SS is our rubber ring design. The steel pole look gives a polished, industrial design look while its secure floor mounting provides support for a variety of doors.

DH223 FLOOR STOPPER



A more simplified design than the DH005, the DS223 boasts a large rubber cylinder on a minimalist steel base.

DH022 WALL STOPPER



A simple, sturdy wall stopper which can be installed on any wall surface perpendicular to the door opening. This can be installed either low on the wall or higher depending on the requirements.

DH-024 WALL STOPPER WITH HOOK



This wall stopper comes with a hook for hats, bags, coats and any other hanging items. Perfect for bathroom doors both in private and public use.

DH-038 CONCEALED DOOR STOPPER



Our concealed closer is installed at the top of the door frame rather than the bottom, providing a hidden yet equally effective door stopping method.

047SN MAGNETIC DOOR CLOSER



Magnetic door closers are perfect for areas you wish to keep open for long periods of time.

AZIRONMONGERY DOOR CLOSERS CATALOGUE

723BC DOOR CLOSER



| | |
|------------------------------------|----------------------------------|
| Closing Force—Spring Strength (EN) | Fixed Size from 2 to 4 |
| Application | Non-handed |
| Standard Installation Door Width | 850mm to 1100mm |
| Maximum Door Weight | 80kg |
| Arm Type—Standard | Snap On |
| Closing Speed Angle | 15 - 180 degrees. Adjustable |
| Latching Speed Angle | 0 - 15 degrees. Adjustable |
| Door Opening Angle | 180 degrees |
| Back Check | Optional / Adjustable |
| Dimensions | L=207mm, H=55mm, Projection=40mm |

| Technical Data | EN2 | EN3 | EN4 |
|------------------|-----|-----|------|
| Max. Door Width | 850 | 950 | 1100 |
| Max. Door Weight | 35 | 60 | 80 |

930BC DOOR CLOSER



| | |
|------------------------------------|------------------------------------|
| Closing Force—Spring Strength (EN) | Adjustable spring power from 2—5 |
| Application | Non-Handed |
| Standard Installation Door Width | 850mm to 1250mm |
| Maximum Door Weight | 110kg |
| Arm Type—Standard | Forged snap on |
| Closing Speed Angle | 15—180 degrees. Adjustable |
| Latching Speed Angle | 0—15 degrees. Adjustable |
| Door Opening Angle | 180 degrees. |
| Back Check | Adjustable |
| Dimensions | L=236mm, H=60mm, Projection=38.5mm |

930BC HEAVY DUTY



| | |
|------------------------------------|----------------------------------|
| Closing Force—Spring Strength (EN) | Adjustable spring power from 2—6 |
| Application | Non-Handed |
| Standard Installation Door Width | 850mm to 1400mm |
| Maximum Door Weight | 150kg |
| Arm Type—Standard | Forged snap on |
| Closing Speed Angle | 15—180 degrees. Adjustable |
| Latching Speed Angle | 0—15 degrees. Adjustable |
| Door Opening Angle | 180 degrees. |
| Back Check | Adjustable |
| Dimensions | L=275mm, H=62mm, Projection=45mm |

| Technical Data | EN2 | EN3 | EN4 | EN5 |
|------------------|-----|-----|------|------|
| Max. Door Width | 850 | 950 | 1100 | 1250 |
| Max. Door Weight | 45 | 60 | 90 | 110 |

| Technical Data | EN2 | EN3 | EN4 | EN5 | EN6 |
|------------------|-----|-----|------|------|------|
| Max. Door Width | 850 | 950 | 1100 | 1250 | 1400 |
| Max. Door Weight | 45 | 60 | 90 | 110 | 150 |

788BC



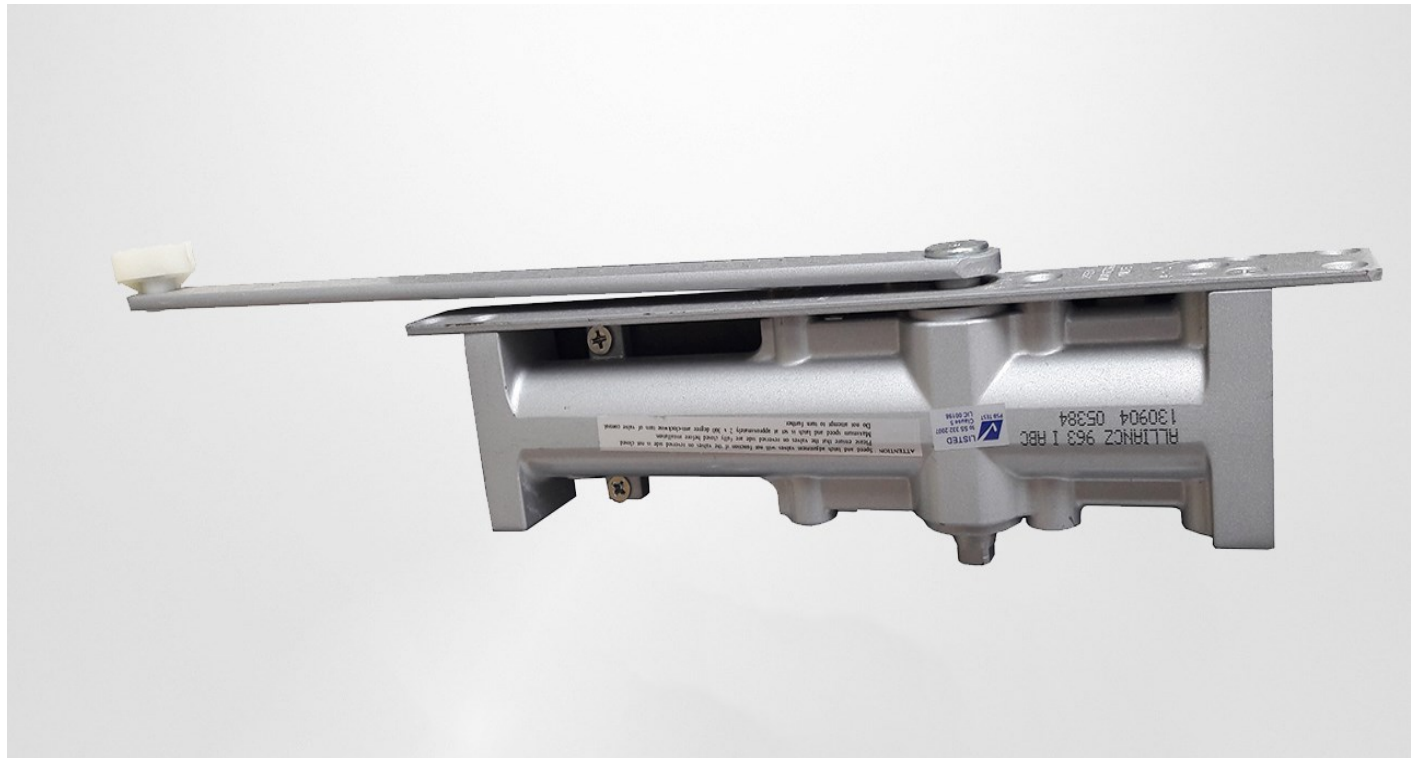
| | |
|------------------------------------|------------------------------------|
| Closing Force—Spring Strength (EN) | 3 EN |
| Application | Non-Handed |
| Standard Installation Door Width | 900mm to 950mm |
| Maximum Door Weight | |
| Arm Type—Standard | Forged snap on |
| Closing Speed Angle | 15—180 degrees. Adjustable |
| Latching Speed Angle | 0—15 degrees. Adjustable |
| Door Opening Angle | 180 degrees. |
| Back Check | Adjustable |
| Dimensions | L=148mm, H=57mm, Projection=37.5mm |

988BC



| | |
|------------------------------------|----------------------------------|
| Closing Force—Spring Strength (EN) | 3 EN |
| Application | Non-Handed |
| Standard Installation Door Width | 900mm to 950mm |
| Maximum Door Weight | |
| Arm Type—Standard | Forged snap on |
| Closing Speed Angle | 15—180 degrees. Adjustable |
| Latching Speed Angle | 0—15 degrees. Adjustable |
| Door Opening Angle | 180 degrees. |
| Back Check | Adjustable |
| Dimensions | L=177mm, H=51mm, Projection=38mm |

963 CONCEALED DOOR CLOSER



| | |
|------------------------------------|----------------------------------|
| Closing Force—Spring Strength (EN) | Fixed Size from 2 to 4 |
| Application | Non-Handed |
| Standard Installation Door Width | 850mm to 1100mm |
| Maximum Door Weight | 80kg |
| Arm Type—Standard | Slide Arm |
| Closing Speed Angle | 15—180 degrees. Adjustable |
| Latching Speed Angle | 0—15 degrees. Adjustable |
| Door Opening Angle | 105 degrees. |
| Back Check | Optional |
| Dimensions | L=230mm, H=57mm, Projection=32mm |

| Technical Data | EN2 | EN3 | EN4 |
|------------------|-----|-----|------|
| Max. Door Width | 850 | 950 | 1100 |
| Max. Door Weight | 45 | 60 | 80 |

DOOR CLOSER
ACCESSORIES



Hold Open Arm

Adjustable arm for exposed door

Standard Finish: Silver Enameled

Optional Finish: SSS, PSS, Bronze & Brass



Hold Open Arm—Forged

Adjustable arm for exposed door

Standard Finish: Silver Enameled

Optional Finish: SSS, PSS, Bronze & Brass



Standard Arm

Standard Arm for exposed closer

Standard Finish: Silver Enameled

Optional Finish: SSS, PSS, Bronze & Brass



Star Arm—Forged

Star Arm for exposed closer

Standard Finish: Silver Enameled

Optional Finish: SSS, PSS, Bronze & Brass



Flat Form Arm

Adjustable arm for exposed doors

Standard Finish: Silver Enameled

Optional Finish: SSS, PSS, Bronze & Brass

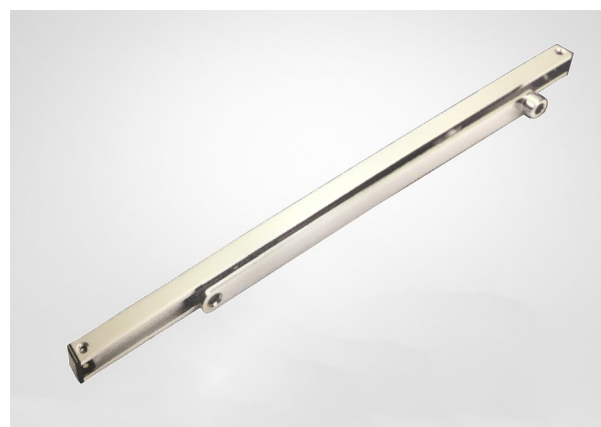


Flat Form Star Arm—Forged

Adjustable arm for exposed doors

Standard Finish: Silver Enameled

Optional Finish: SSS, PSS, Bronze & Brass



Slide Arm & Track

Adjustable arm for exposed door

Standard Finish: Silver Enameled

Optional Finish: SSS, PSS, Bronze & Brass

AZIRONMONGERY

FLUSH BOLTS

CATALOGUE



BFB BOXED TYPE FLUSH BOLT



Flush bolts are used on double leaf timber doors when one door is usually kept inactive, the hinges are located on the outside while the flush bolt is installed on the inside to help hold the door in place. Our flush bolts are available in a range of sizes from 200mm—1000mm, to suit all varieties of doors.

EFB EXTENSION FLUSH BOLT



Extension flush bolts are great for both timber and metal doors. Extension flush bolts range from 300 to 1000mm depending on height of door.

PBS AUTO FLUSH BOLT



Most flush bolts require manual locking and unlocking, however with the auto flush bolt the hard work is done for you. Coming a completely boxed system, the auto flush bolt is the easy way to secure your door with none of the stress.

DUST PROOF SOCKET



The dust proof socket is installed as a set with a flush bolt, it is installed in the floor and acts as the socket for the flush bolt to lock into. The mechanical top lid keeps the socket dust free while not in use, deterring any debris from entering the socket and causing internal damage.

AZIRONMONGERY GLASSDOOR HARDWARE CATALOGUE



Glass doors are elegant in their appearance, they brighten up a room by letting in natural light, as well as providing options for engraving and frosting. So why spoil this flush design with bulky, unsightly ironmongery? This range of glass door accessories is secure and reliable, while also providing a flush, attractive look to your door. There are both cylinder and electric locking solutions, providing a variety of security levels perfect for a variety of locations. These fittings are great for residential and office use, providing a touch of glamour to your doorway.

TOP & BOTTOM PATCH FITTING



This simple and minimalist fitting utilizes the top and bottom corners of the glass door panel, creating a flush look that leaves the rest of the door clean and minimalist.

CORNER PATCH LOCK



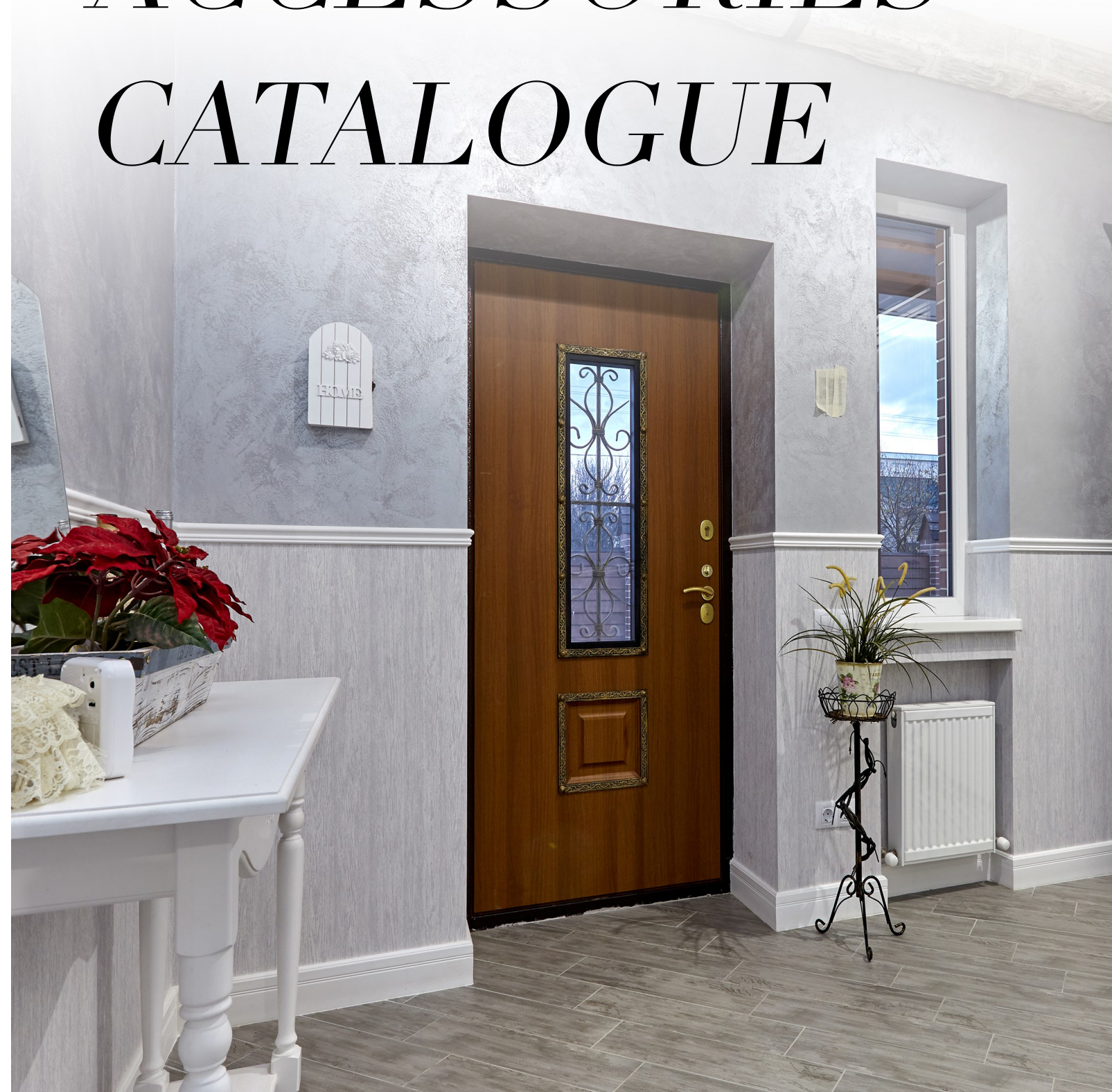
The corner patch lock can be utilized with the patch fittings on the opposite bottom corner of the door to act as the lock for the door.

ELECTRO-MAGNETIC LOCK



The most popular choice for offices and condominiums, the electro magnetic lock is the perfect security solution for your glass door. Instead of using keys, you can use buttons, scanners, or FOB.

AZIRONMONGERY DOOR ACCESSORIES CATALOGUE



WL02 SLIDING HOOK LOCK



This special mortise lock body works with all European Profile Cylinders, and is especially effective when used with sliding doors. The lock works with a double throw function, 1st throw activates the bolt, 2nd throw the top and bottom Bolt.

RECT RECESS W THUMBTURN



This recessed handle works perfectly with our sliding door system and hook lock. By providing a rectangular recess that can be used for pushing and pulling the door, and also making this the space for the thumb turn to be used, this one little handle provides many solutions.

BC002 BALL CATCH



Ball Catch hardware is perfect for doors where a latch is not needed or used. Most commonly used on closet doors, the strike plate will be mounted on the outer frame where the ball will catch, holding the door closed.



Round Recess Escutcheon



Round Recess w Thumbturn



Square Recessed Pull Handle



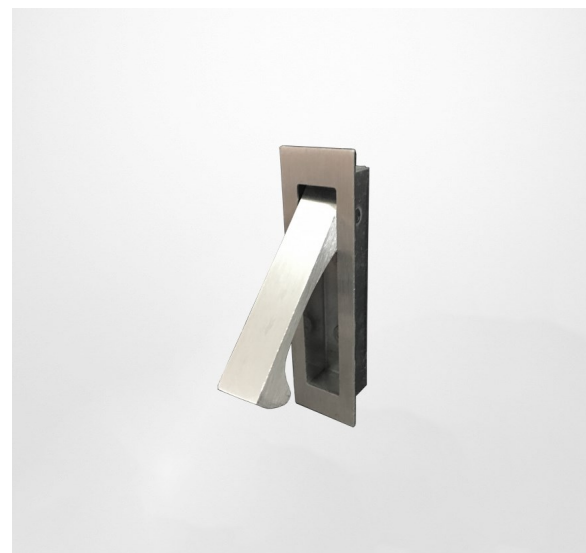
FH0040 50 x 100mm SS Rectangular Recess Handle



135-60 Rectangular Recess Handle



FH003 SS Oval Recessed Pull



268L SN Edge Pull



EV180 SN Eye Viewer



CH75 Cup Ring Handle



FH0010 Round Recess Handle



DS120 Door Selector

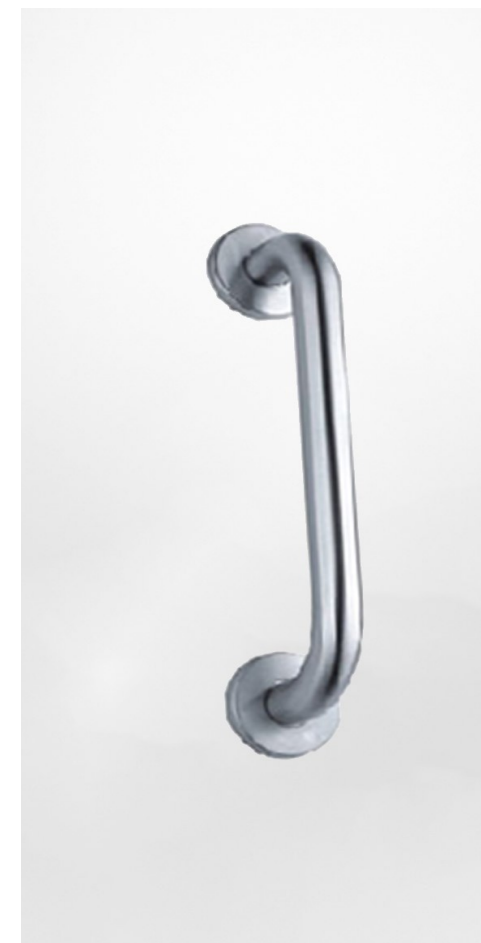
AZIRONMONGERY PULL HANDLE CATALOGUE





AZ SS "H" STYLE PULL HANDLE

| Article No. | Dimensions |
|------------------|-------------------|
| SS H HANDLE 600 | L= 600mm, D=32mm |
| SS H HANDLE 650 | L= 650mm, D=32mm |
| SS H HANDLE 800 | L= 800mm, D=32mm |
| SS H HANDLE 1200 | L= 1200mm, D=32mm |
| SS H HANDLE 1500 | L= 1500mm, D=32mm |
| SS H HANDLE 1800 | L= 1800mm, D=32mm |
| SS H HANDLE 2000 | L= 2000mm, D=32mm |



HANDICAPPED GRAB BAR

| Article No. | Dimensions |
|----------------------|----------------|
| HANDICAPPED GRAB BAR | L650mm, D=38mm |



AZ SS "D" STYLE PULL HANDLE

| Article No. | Dimensions |
|-----------------|------------------|
| SS D HANDLE 225 | L= 225mm, D=19mm |
| SS D HANDLE 650 | L= 650mm, D=19mm |



PH266 SS PULL HANDLE

| Article No. | Dimensions |
|--------------|-------------------|
| PH029-30/400 | L=400, D= (30x15) |
| PH029-30/600 | L=600, D= (30x15) |
| PH029-40/500 | L=500, D= (40x20) |
| PH029-40/600 | L=600, D= (40x20) |
| PH029-40/800 | L=800, D= (40x20) |



PH041 SS PULL HANDLE

| Article No. | Dimensions |
|--------------|--------------------|
| PH041-20/300 | L=300mm, D=(20X10) |
| PH041-20/400 | L=400mm, D=(20X10) |
| PH041-20/500 | L=500mm, D=(20X10) |



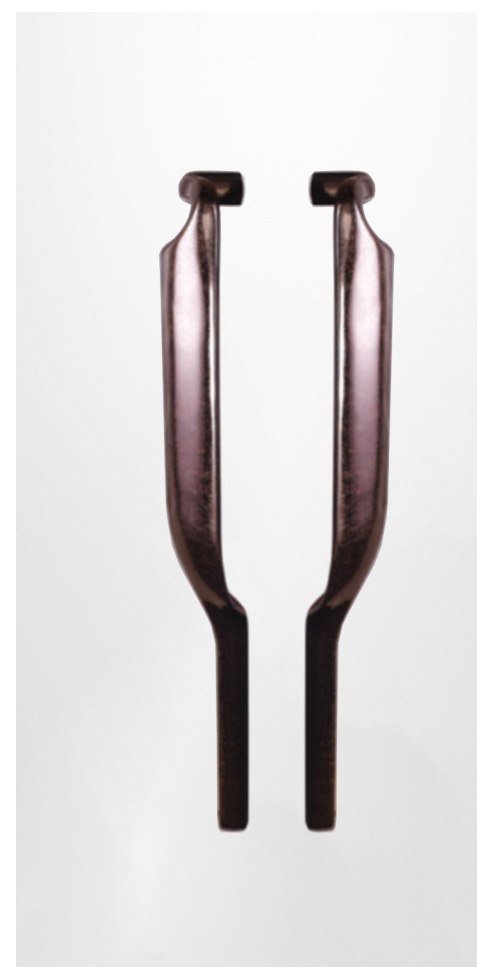
PH272 SS PULL HANDLE

| Article No. | Dimensions |
|-------------|------------------|
| PH272 | L=850mm, D=106mm |



SS CRANK PULL HANDLE (BTB)

| Article No. | Dimensions |
|-------------------|----------------|
| CRANK PULL HANDLE | L600mm, D=32mm |



PH452 PULL HANDLE

| Article No. | Dimensions |
|-------------|-----------------|
| PH452 | L=825mm, D=98mm |





PH265 SS PULL HANDLE

| Article No. | Dimensions |
|-------------|-----------------|
| PH265—70 | L=530mm, D=70mm |
| PH265—90 | L=600mm, D=90mm |



PH266 SS PULL HANDLE

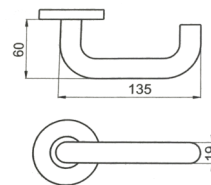
| Article No. | Dimensions |
|-------------|-----------------|
| PH266 | L=475mm, D=86mm |

AZIRONMONGERY LEVER HANDLES CATALOGUE

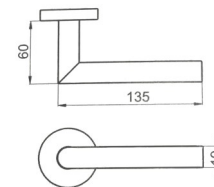




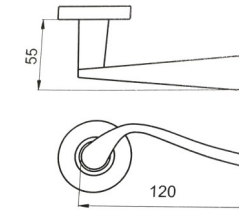
8101 SS LEVER HANDLE



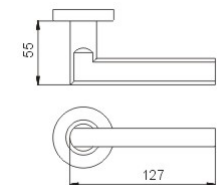
8104 SS LEVER HANDLE



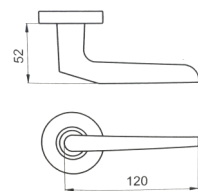
8094 SS LEVER HANDLE



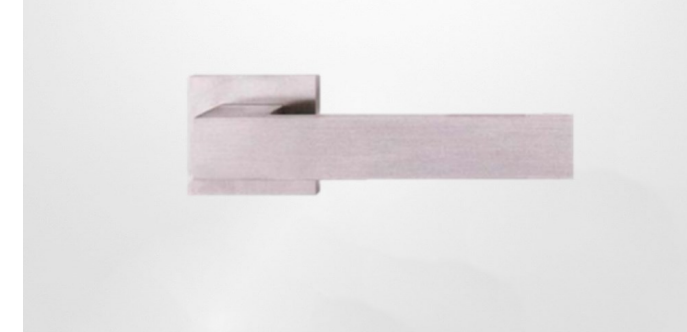
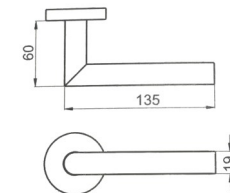
8046 SS LEVER HANDLE



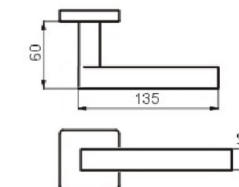
8041 SS LEVER HANDLE



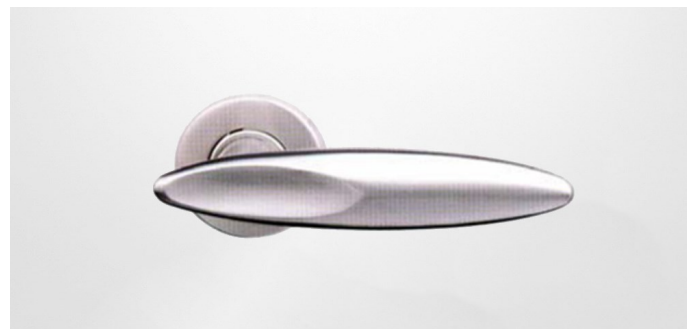
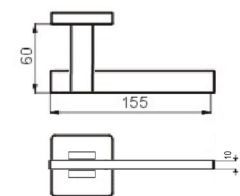
8024 SS LEVER HANDLE



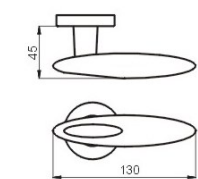
8144 SS LEVER HANDLE



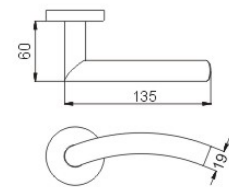
8152 SS LEVER HANDLE



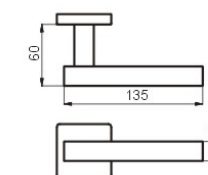
8038 SS LEVER HANDLE



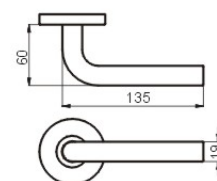
8244N SS LEVER HANDLE



8171 SS LEVER HANDLE

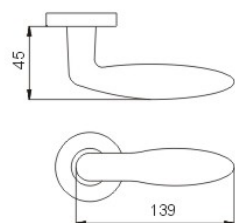


8047N SS LEVER HANDLE





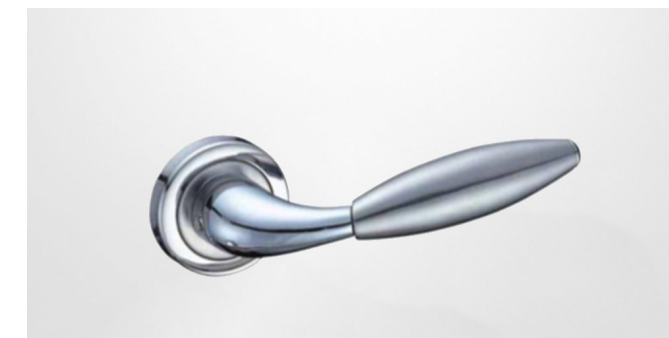
8246 SS LEVER HANDLE



8013 SS LEVER HANDLE



8135 SS LEVER HANDLE



8199N SS LEVER HANDLE



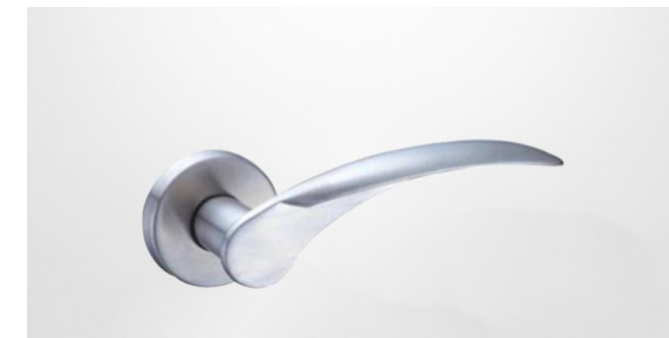
8186 SS LEVER HANDLE



8222 SS LEVER HANDLE



8251 SS LEVER HANDLE



8232N SS LEVER HANDLE



8239 SS LEVER HANDLE



8245 SS LEVER HANDLE



8151 SS LEVER HANDLE



8034 SS LEVER HANDLE



KS74204 LEVER HANDLE



KS79205 LEVER HANDLE



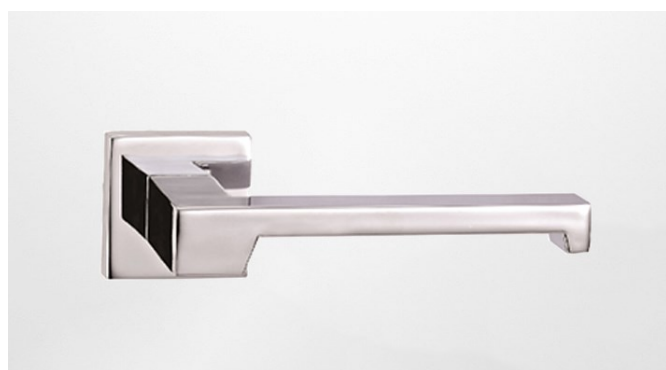
KS74210 LEVER HANDLE



KS74215 LEVER HANDLE



KS79206 LEVER HANDLE



KS79207 LEVER HANDLE



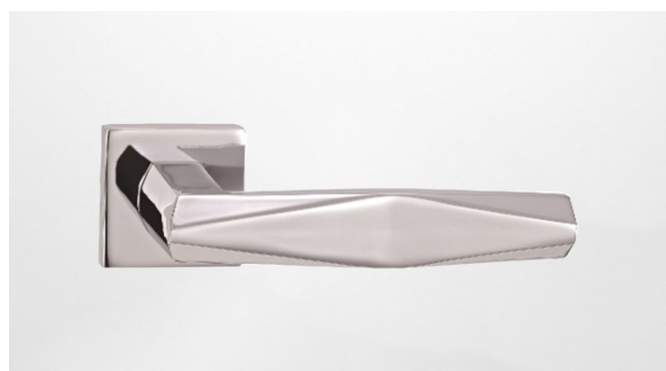
KS79217 LEVER HANDLE



KS79221 LEVER HANDLE



KS74208 LEVER HANDLE



KS79209 LEVER HANDLE



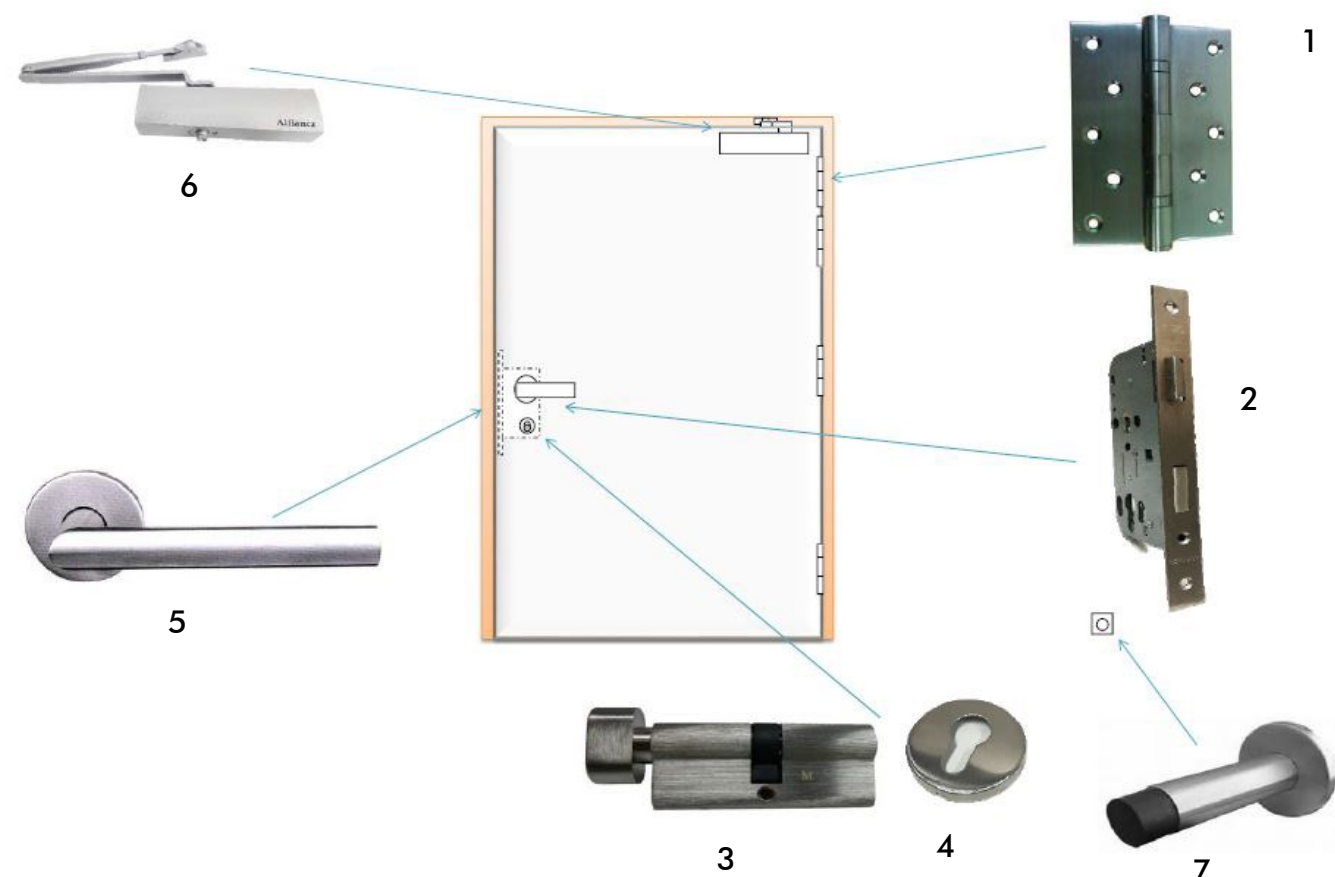
KS79222 LEVER HANDLE



KS74223 LEVER HANDLE

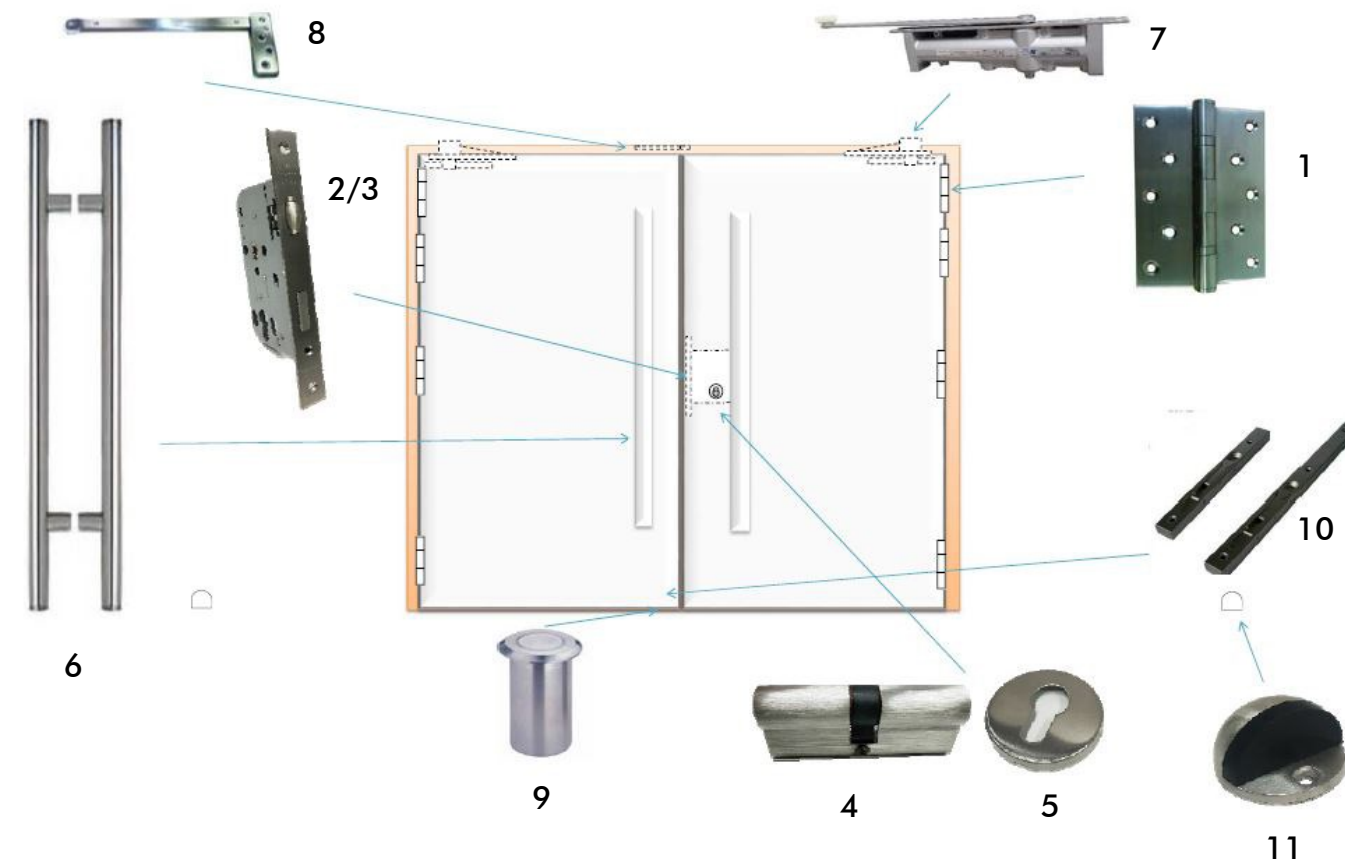
HARDWARE SET

LEVER HANDLE SET



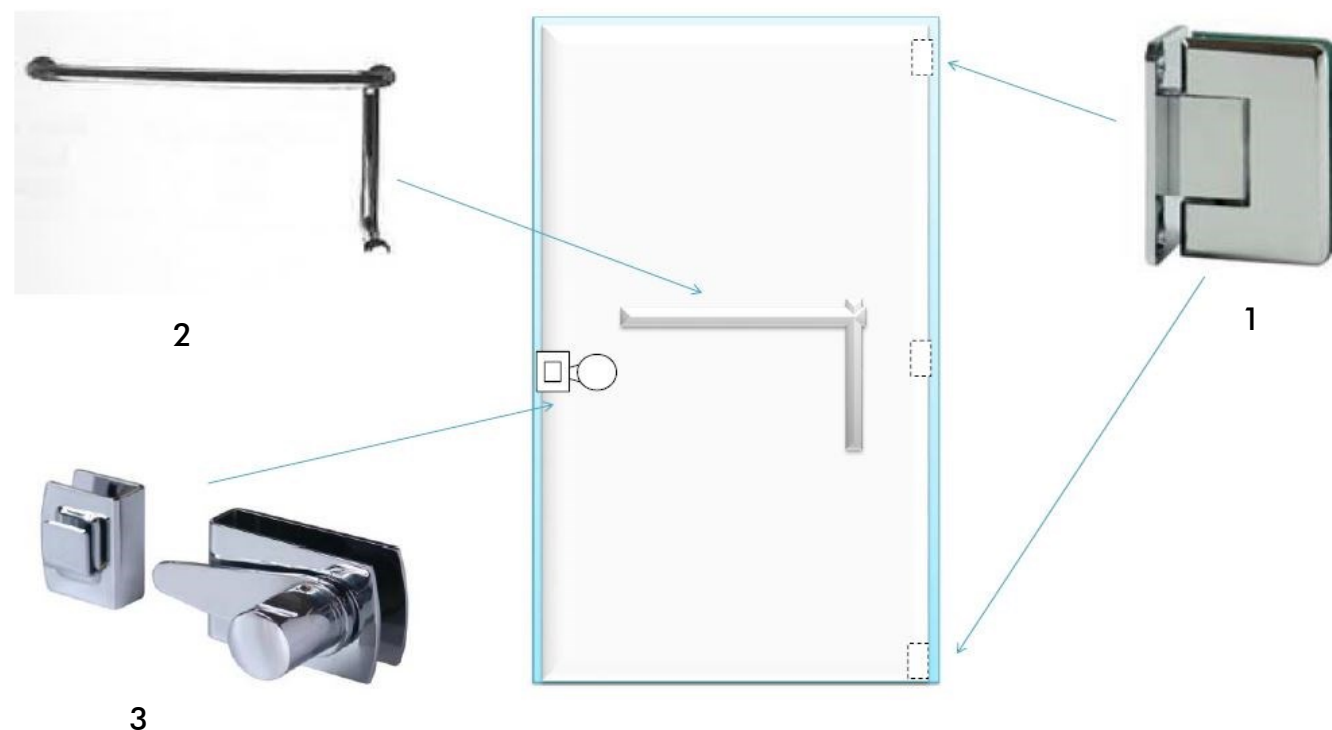
1. ALLIANCZ - 127X89X3MM 2BB SS HINGE
2. ALLIANCZ - 7003/60 SASHLOCK C/W STRIKE & BOX
3. ALLIANCZ - 215.70 SNP KEY & THUMBTURN CYLINDER UNDER MK SYSTEM
4. ALLIANCZ - 8MM SS ESCUTCHEON
5. ALLIANCZ - 8104 SS FIXED/DUMMY LEVER HANDLE ON ROSE IN PAIR
6. ALLIANCZ - 988BC DOOR CLOSER SIZE 2-4
7. ALLIANCZ - DH022 WALL STOPPER

PULL HANDLE SET



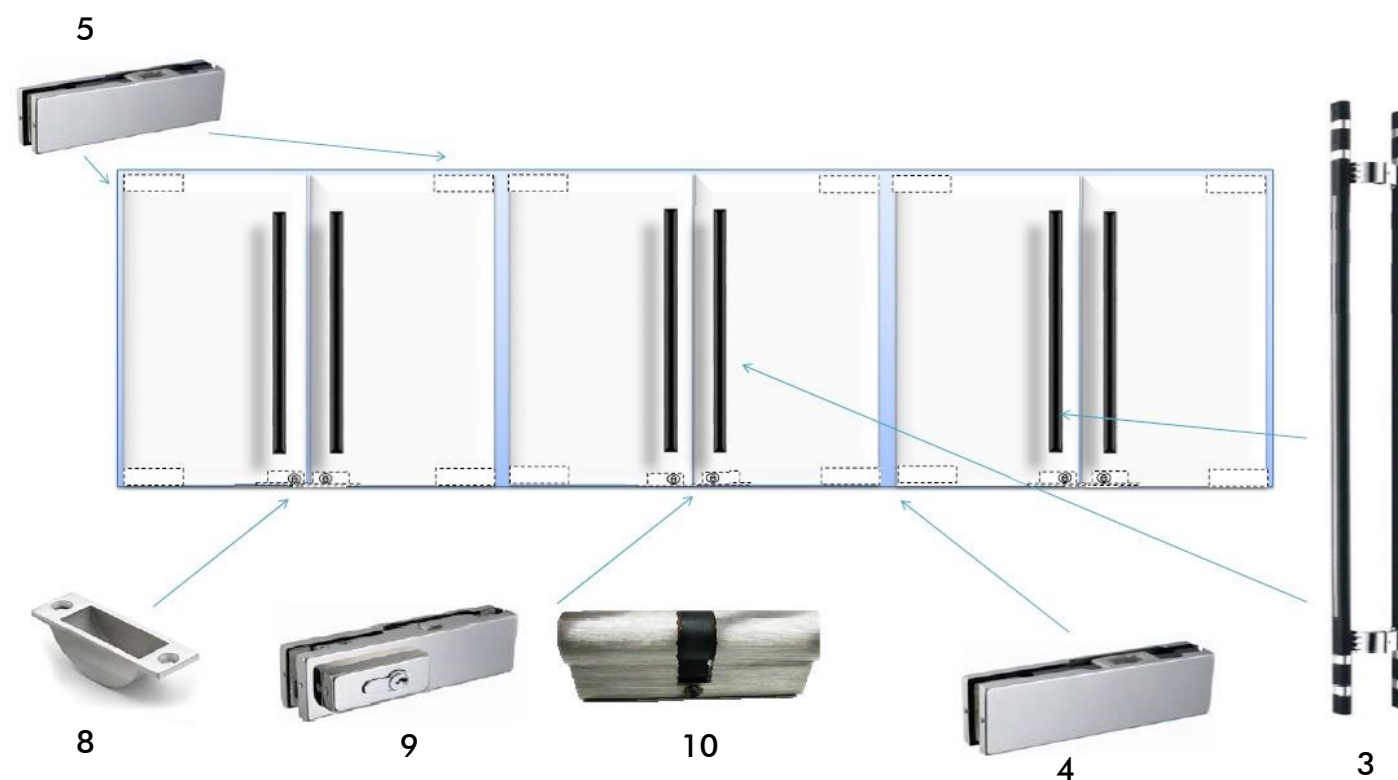
1. ALLIANCZ - 127X89X3MM 2BB SS HINGE
2. ALLIANCZ - 7521/60 MORTISE ROLLER DEADLOCK CW STRIKE & BOX
3. ALLIANCZ - REBATED KIT FOR 7000 SERIES
4. ALLIANCZ - 310.70 SNP DOUBLE CYLINDER UNDER MK SYSTEM
5. ALLIANCZ - 8MM ESCUTCHEON
6. ALLIANCZ - H PULLHANDLE 1500X32MM DIA. BTB FIXING SSS FOR TIMBER DOOR
7. ALLIANCZ - 963BC CONCEALED DOOR CLOSER WITH BACKCHECK
8. ALLIANCZ - DS120 DOOR SELECTOR
9. ALLIANCZ - DUST PROOF SOCKET
10. ALLIANCZ - BFB SS 300/600MM BOX TYPE FLUSH BOLT
11. ALLIANCZ - DS632 SN DOME SHAPE FLOOR STOP

SHOWER DOOR SET



1. ALLIANCZ - PM PD GX990 WALL TO GLASS SHOWER HINGE
2. ALLIANCZ - PM PD H12 275MM X 425MM X 25MM DIA SHOWER PULL HANDLE (IN PAIR)
3. ALLIANCZ - PM SHOWER LOCK GK 624 US 624

GLASS DOOR WITH PULL HANDLE SET



1. ALLIANCZ - TD800 FLOOR SPRING C/W FLOOR SPRING
2. ALLIANCZ - SSS COVER PLATE INCLUDED ABOVE
3. ALLIANCZ - RB4544 2000MM X 38MM DIA. BTB FIXING IN 2-TONE BLACK & SS FOR GLASS DOOR
4. ALLIANCZ - PD10 SSS BOTTOM PATCH FITTING FOR GLASS THK 12MM - 15MM
5. ALLIANCZ - PD20 SSS TOP PATCH FITTING FOR GLASS THK 12MM - 15MM
6. ALLIANCZ - PM PD24 SS TOP PIVOT
8. ALLIANCZ - PM EASY CLEAN SOCKET
9. ALLIANCZ - PL50 CORNER PATCH LOCK
10. ALLIANCZ - 310.70 SNP DOUBLE CYLINDER FOR PL50 CORNER PATCH LOCK



CONTACT US

ALLIANCZ INTERNATIONAL PTE LTD

Address: 40 Ubi Crescent, #01-02, Ubi Techpark, Singapore 408567

Website: www.allianczinternational.com

Email: enquiry@allianczinternational.com

Telephone: 6743 3313



Alliancz International Pte Ltd